

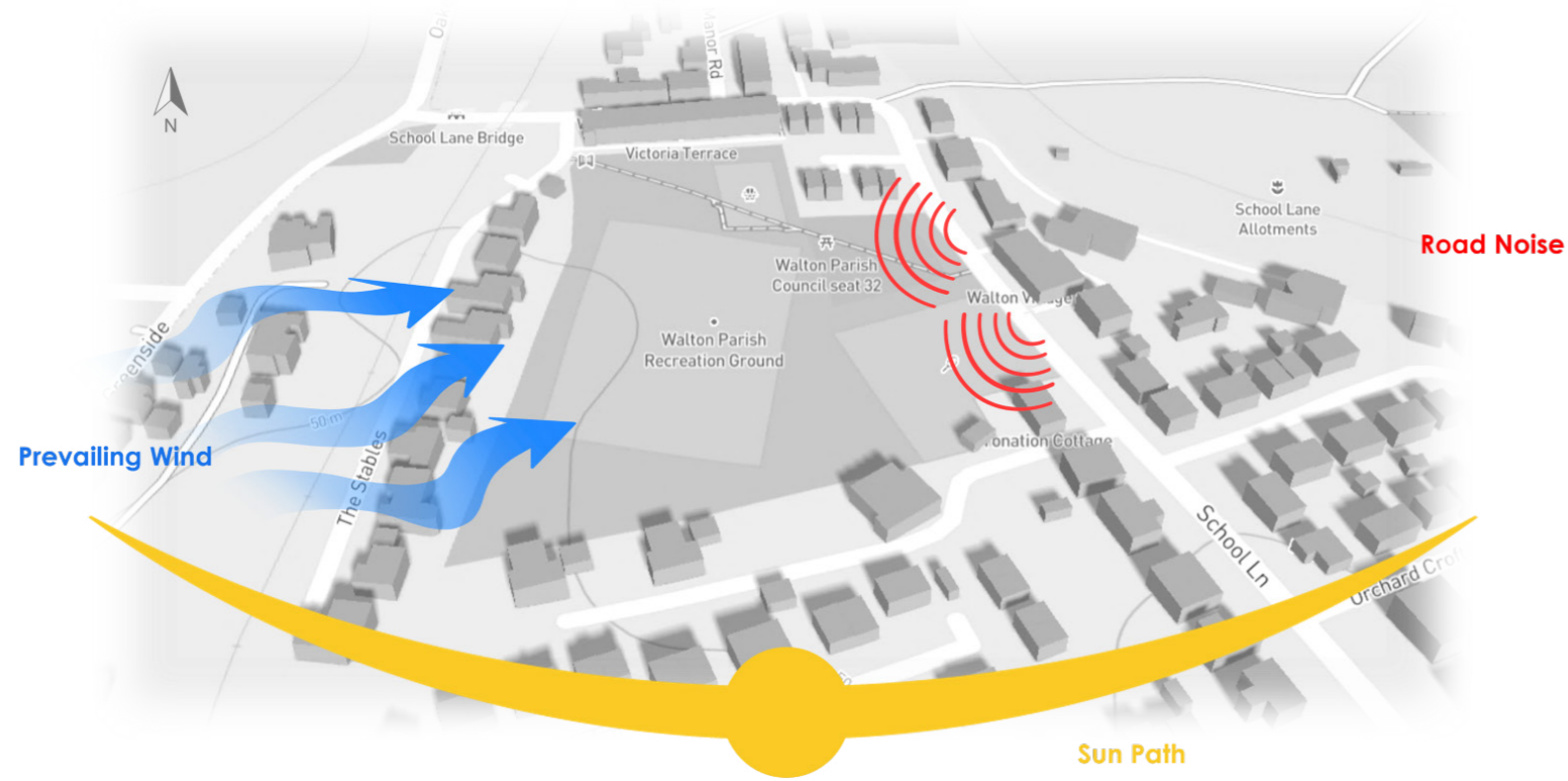
# Walton Park Design



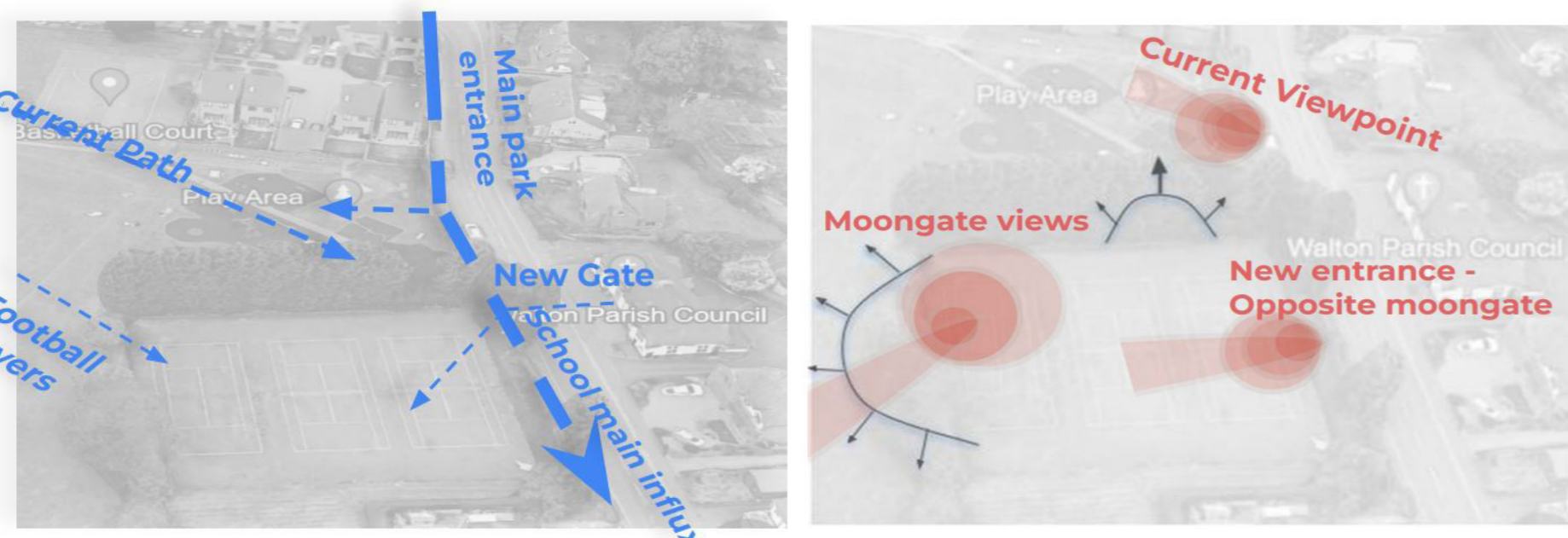
## Design Aims

- Create an impactful sensory experience through designing organic shaping of wild flower meadows, soft plantings and grass areas to fulfill the blend of play and relaxation for community.
- To improve connectivity with current play park areas creating a deeper sense of cohesion and togetherness.
- To ensure the site is inclusive and easy access for all users across a wide demographic.

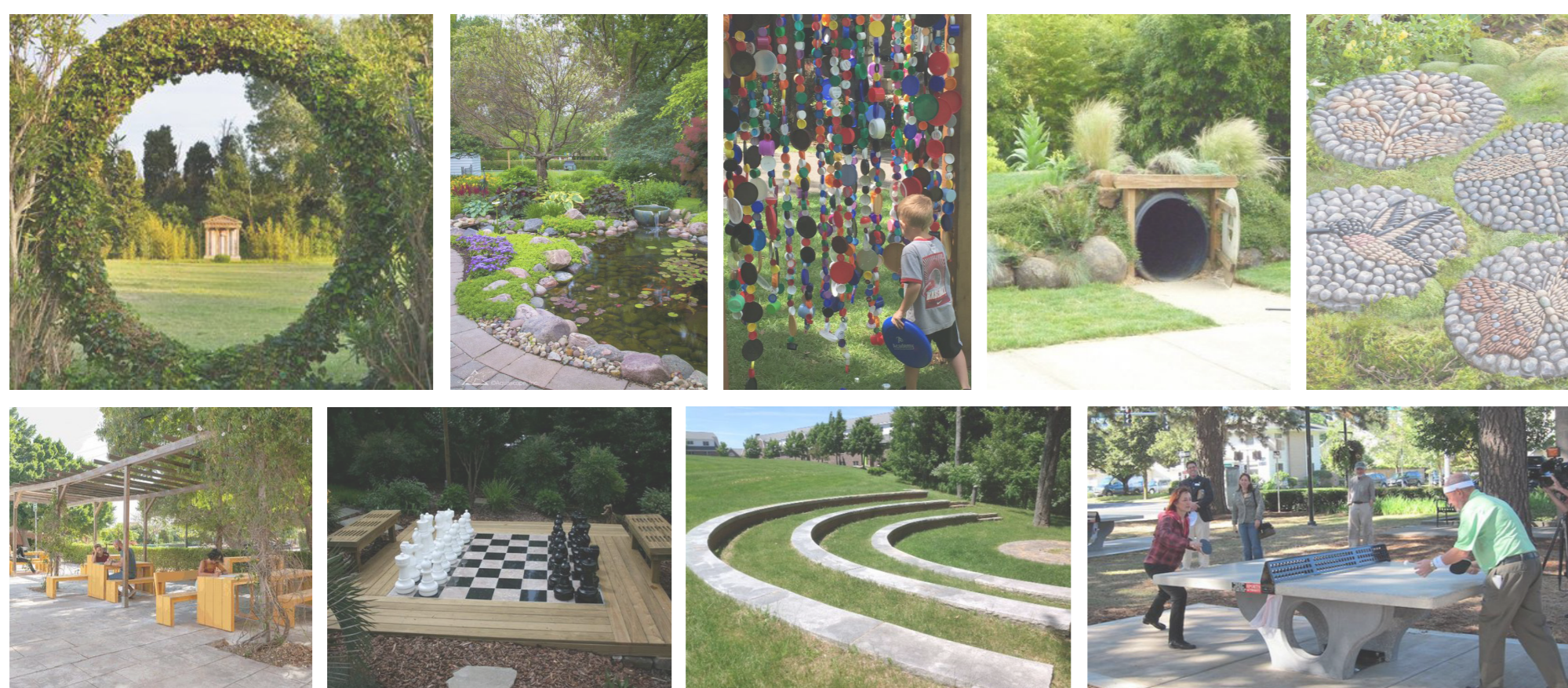
## Site Analysis



Walton Park is located to the south east of Wakefield and surrounded by a residential area. The old tennis courts to the south east edge of the park have been removed leaving an open space. The site experiences noise pollution from the road along the east side. The site is sheltered from the south west prevailing winds due to the surrounding buildings, mature trees and hedge. In general the site receives a high level of sun light as a clear open space, only the south edge is shady due to the surrounding buildings.



## Mood Board



## Masterplan: Design One



Design One was inspired by the surrounding walton hall and nature reserves to create an organic shaped sensory garden, an inclusive and welcoming design for Walton's demographic. The design encompasses six character areas. This includes a small amphitheatre with cherry tree, suitable for small performances and acts as a central focal point within the design. A naturalistic pond acts as an oasis for wildlife, increasing Walton parks biodiversity, and remains safe with a low barrier around the edges. The sensory trail and mound with tunnels create a natural play area for younger children, enclosed by a pergola for parents to sit and watch. The Pentaque court allows older generations to take part in outdoor games, with seating around the edge providing the opportunity for social events. The existing pavilion has potential to become a small cafe with outdoor seating. The Patio area supports other outdoor games such as table tennis for teenagers and an interactive chess set. Finally the picnic area offers a more spacious spot for residents to relax and play whilst surrounded by nature.

