

An aerial photograph of Wakefield Walton Park. The park features a large green lawn, a red clay tennis court, a basketball court, and a playground. It is surrounded by residential houses and a road.

Wakefield Walton Park Group Sketchbook LA601 - Design & Community 1

Group 1 -
Mohamed, Sanaa, Aimee, George, Georgie,
Charles & Maire

Contents Page

- 1) Site Analysis and Aims
- 2) Site visit - Constraints / Opportunities
- 3) Case Studies
- 4) Initial ideas - Whole Site
- 5) Community Engagement with Results
- 6) Adapted Aims - Design Concepts
- 7) Zoning Diagram 1 & 2
- 8) Design Phases
- 9) Option 1 - Masterplan, section and visual
- 10) Option 2 - Masterplan, section and visual
- 11) Final Sheet copy and Reflection
- 12) Group Task Separation

Park Boundary

Walton Park,
Parish Recreation
Ground



Analysing Aims of Project

Perhaps suggests a limited age based client response, adults, young adults use but lacking in children and elderly as they don't tend to use social media

+

Modernised consultation during pandemic too

Much more inclusive and accessible way of receiving feedback from whole community, though does have limited choices from previous questions

Aims of project

The site was previously leased to a private tennis club. When the tennis club gave up the lease, a consultation exercise was run on Facebook in 2020 seeking suggestions as to the use of the site. The suggestions were short-listed by the Parish Council and a further consultation was conducted in November 2022, this time via the printed newsletter delivered to every home in the village. The results, in order of preference, were:

1. Public gardens including a sensory garden.
2. Play/exercise area for older children (something more challenging than existing play area).
3. Outdoor games area including boules/petanque and table tennis.
4. Multi use sports area with macadam surface suitable for basketball, netball and tennis.
5. Outdoor gym for teenagers and adults.
6. Community orchard.
7. Multi use sports area with synthetic turf suitable for football, hockey and rugby training.
8. Open air performance area (some form of hardstanding/stage/seating areas).

The Parish Council wishes to deliver the top three preferences across the site, with the priority being the creation of a public garden. 2023 being the year of King Charles III's coronation, the intention is that the garden should form a permanent commemoration of the event.

Really positive to enhance the senses and to relax, increasing mental health benefits

Pushing improving physical health and a free way to exercise

Lowest tier of government, implies low funding available and low on hierarchy of importance, but do offer community activities across Wakefield

Important history relevance, meet client needs and offer ways to achieve this well

Stage One: Research

Aimee - Surrounding Context

Marie - Physical Aspects

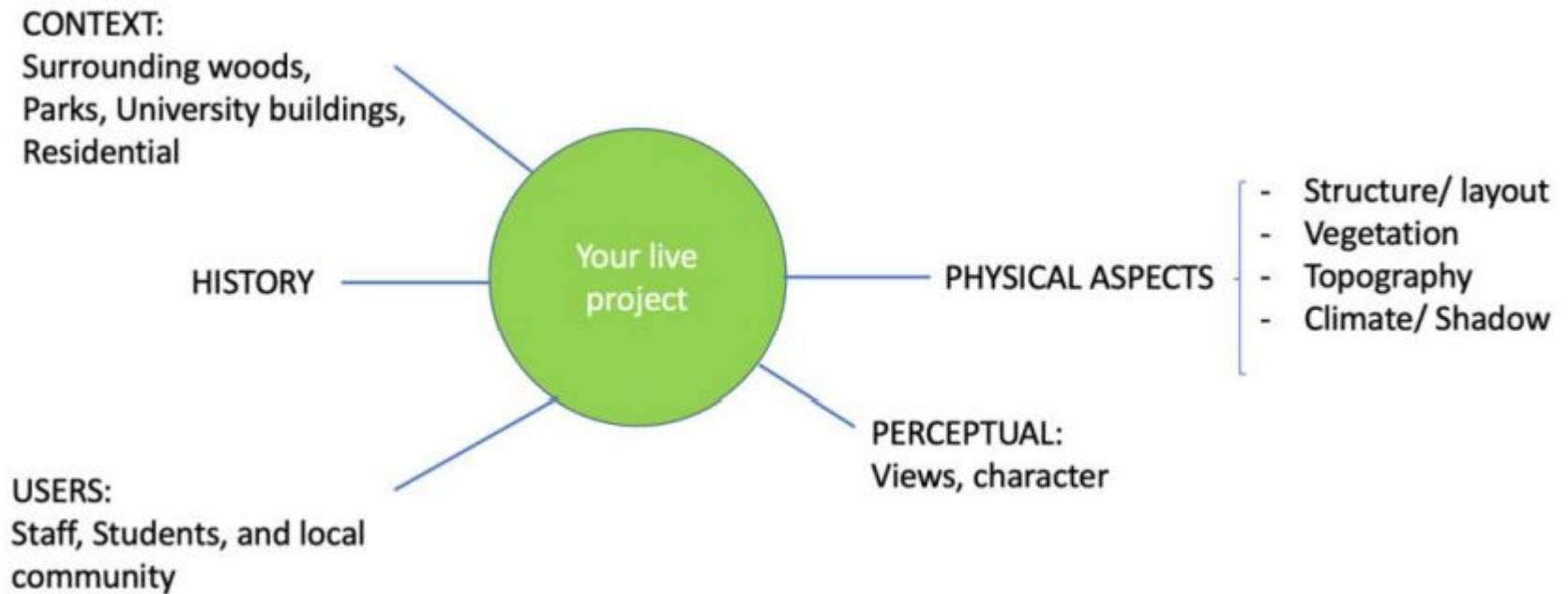
Charles - Users

Mohammad - Physical Aspects

George - Physical Aspects

Sanna - Surrounding Context

Georgie - History & Perceptual



History Research

The village of Walton dates back to Saxon Times where the name Walton was mentioned in the doomsday book 1086. Walton literally translates to “Welshman's village” with other evidence of links to Wales pre-dating the Saxon era.

Walton was also home to the famous family the Waterton's, who appear in records dating back to 1435 when Richard Waterton, the Lord of Walton, who constructed a grand house on the estate where the current Walton Hall estate stands. The original gateway, surmounted by a crucifix still stands on site.

In 1645 during the civil war, parliamentary forces attacked the Hall. Cannonball marks still remain in the old gatehouse.

During the Industrial Revolution, Walton underwent major changes. Attempts were made to extract coal on a commercial scale from the 17th Century. However it wasn't until 1890 that mining became established. Over time the scale of the development grew from 700 to 1200 employees in 1930. The mines were finally closed in 1979 and has now been transformed into a nature reserve.

Transport also played a significant role in the industrial revolution resulting in the development of the Barnsley Canal in 1793 from the river Calder in Wakefield to the Barnsley basin. It was opened in 1802 with 15 locks built over the 16 mile course. Sadly the development of the railways soon took over, proceeding in the steady decline of the canal which eventually closed in 1953.

Sandal and Walton train station was opened in June 1870 and was constructed in the classic midlands brick. The 2 platforms allowed the transportation of goods and south bound passengers trains from Wakefield. The Station was closed in June 1961. While the tracks still remain the station itself has now been replaced by residential homes.



Location of Walton within Wakefield



Waterton Park Hotel and Walton Hall

Walton Hall & Charles Waterton

Walton Hall is a country house located southeast of the Walton village. The former moated medieval hall was designed in the Palladian style in 1767 on an island within a 26 acre lake. The Hall is only accessible via a footbridge over the lake.

In 1804 Waterton travelled to British Guiana to manage his uncles plantations near George Town. During his time in South America he explored Brazil's rain forest and published the book "Waterton's wanderings in South America" where he describes his encounters with the environment.

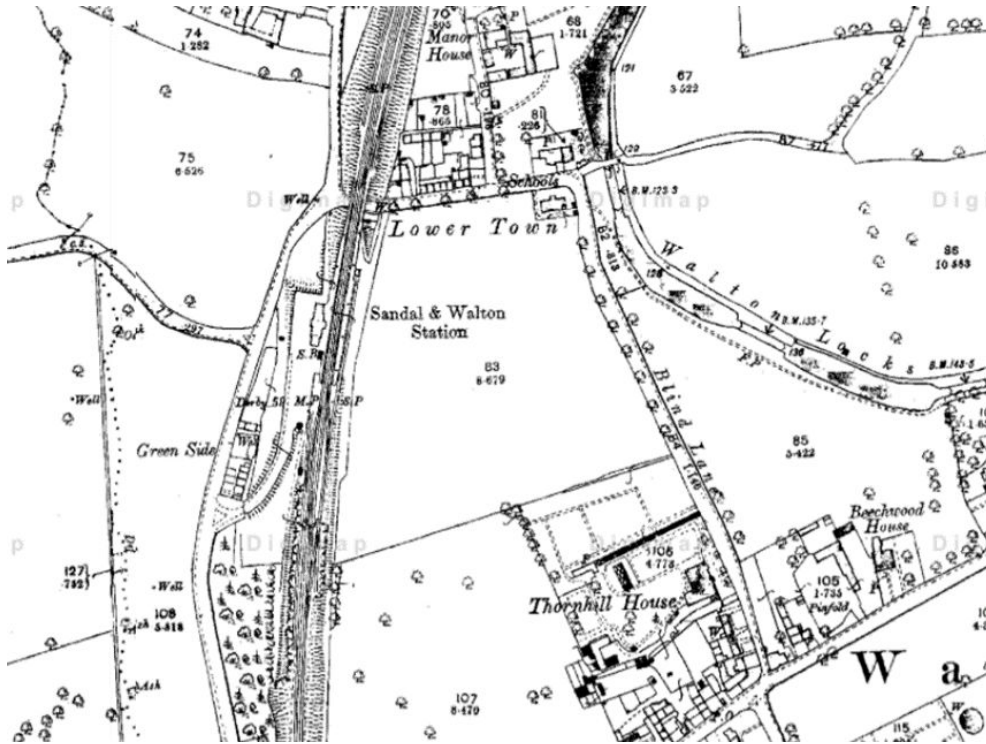
Waterton has been described as one of the first environmentalists and inspired the works of Charles Darwin and Alfred Russel Wallace.

When Waterton returned to Walton Hall he built a 9ft wall around 3 miles of the estate, creating the world's first nature reserve. Today The hall and estate is a proposed UNESCO world heritage site.



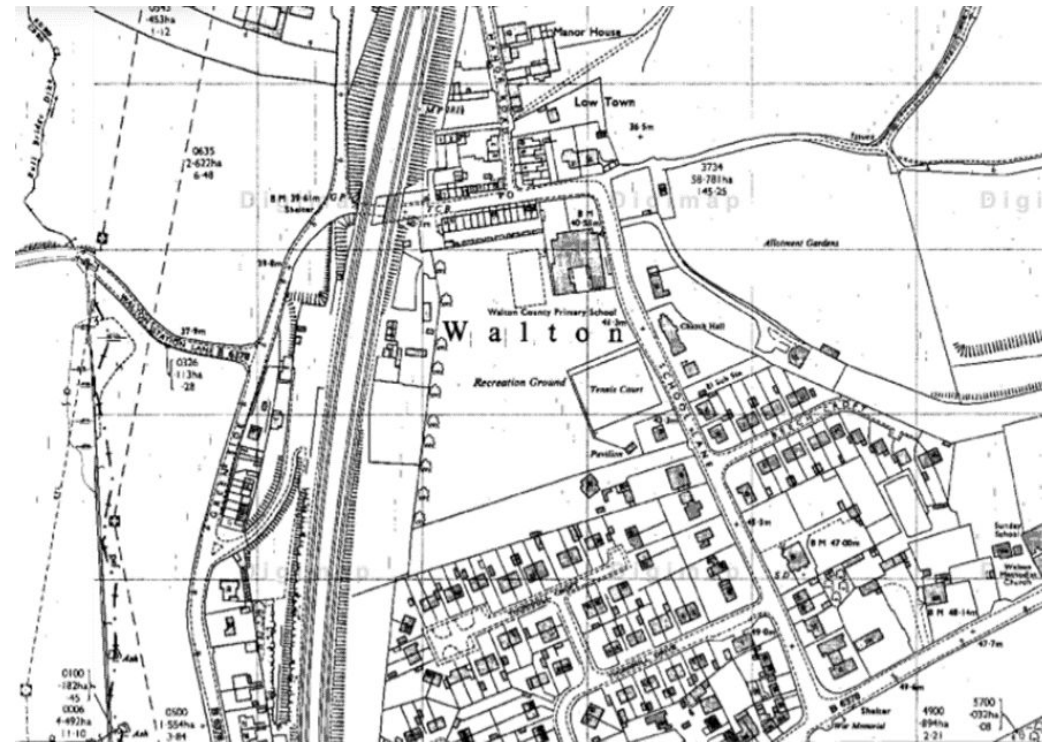
Charles Waterton

Site History



1857s

In 1857, Miss Mary Pilkington of Chevet Hall opened a new National School on School Lane. In 1871, she founded her Training, Laundry and Cooking School, across the road in the two cottages, built in 1867 for this purpose, that are now known as Manor House and Bridge House. Following the establishment of the National School, the earlier schools declined and closed.



1970s

Walton lost its own railway station in the early nineteen sixties, around the time that the English railway network was decimated during the Beeching cuts ordered by the government of the day. The old Midland line, where the station was located, to the west of the village (by Greenside), is still in use as a goods line and for the testing of trains. The station has gone but the village is still bounded on three sides by the remnants of the once extensive railway system.

Surrounding Context Visual



Grade II Listed building since April 1973 for its architectural and historic importance.

“ We are part of the Walton Library sponsorship, the Library was recently closed by the local council and is now run by volunteers. “

Walton Parish Council

The site and surrounding park is owned by **Walton Parish Council**. The Parish Council is a civil authority and the lowest tier of local government. It is an elected corporate body (sometimes referred to as statutory body) with variable tax raising powers which carries out beneficial public activities across the civil parish of Walton, Wakefield.



Walton Village Hall



Walton Parish Boundary

The Walton Parish Council comprises up to 11 members. All Councillors are volunteers and receive no remuneration. Parish Council meetings are usually held on the first Tuesday of each month, at the Village Hall, in order to discuss issues affecting the parish and its residents.

Key Census statistics



Walton community library: A key gathering spot for the elderly and young families



Walton Primary Academy: The main school in the area, it educates 370 children from the ages of 3 - 11

Age

- 30% - 55% of the population is over age 65 or over - considerably above the average of the county area
- 40% - 58% of the population is 16 – 64 years old - *average with the county area*
- 14% - 17% of the population is 16 or under - *average with the county area*

Education

- 85% are not full-time students
- 15% are full time students

Ethnicity

- 98.5% of the population is white

Housing

- 99% of the population live in whole houses/bungalows

Disability

- <10% of the population have a disability

General health

- <45% of the population have a very good general health
- <35% of the population has good health
- <7% of the population has poor or very bad health

Economy

locals who are employed:

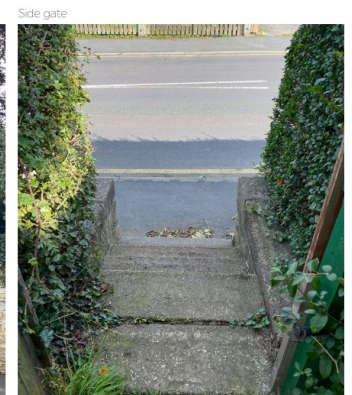
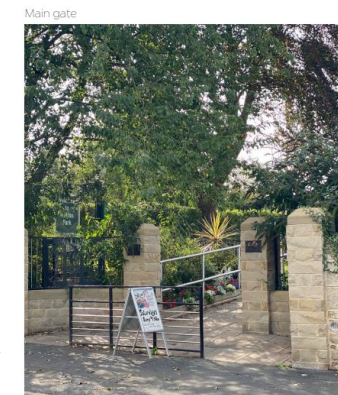
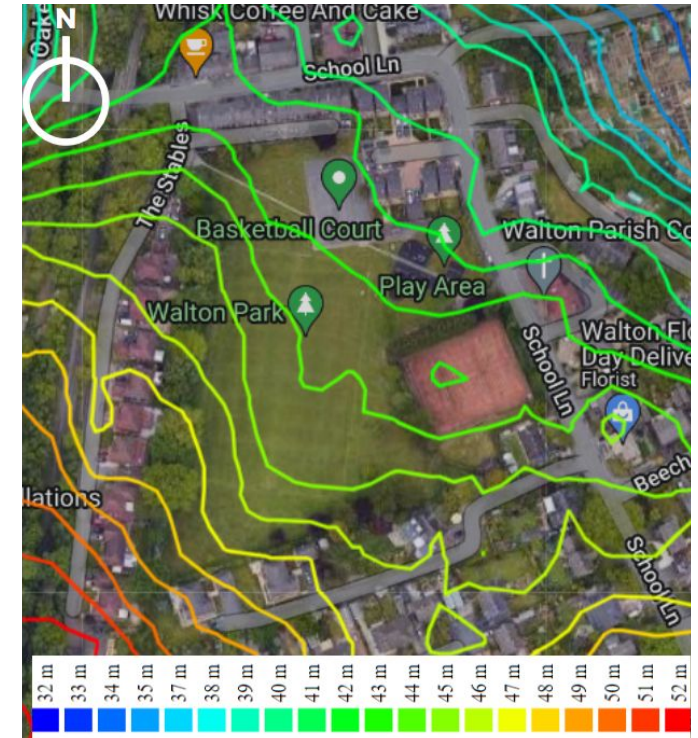
- 54% of the population (16 or older) are employed

Physical Layout & Topography

This diagram shows the layout of the park. Highlighting the boundary in Red, the park is surrounded by roads and houses. The park as a football and basketball pitch and a children playground in a good conditions. Only 3 entrances to the park highlighted in dashed blue circles, it does not connect but we will aim to enhance the park connectivity. 3 main playful areas that has a good connectivity however the tennis court is removed leaving it with an empty area. The road surrounded the park are not heavy and a new housing homes do exist around the park. Mainly children use the children playground after school which is 10 mins walk from the park. Pathways to be enhanced since it does not cover 1/3 of the overall park.



The contour lines shows the topography of the place. It illustrates a difference of 20 meters from the south west of the park to the north east. Meaning that the lowest point on site is the north east, creating a lot of opportunities and design ideas to adapt to such a change in levels. However most of the site is plan so the change of levels is not noticed apart from the Entrance o te park. Each Entrance has 4 steps to enter the park meaning that the change in levels is highly noticed in approximately 1 meter only. Disable entrance does exist in the main gate but it can be better



Surrounding Buildings & Roads

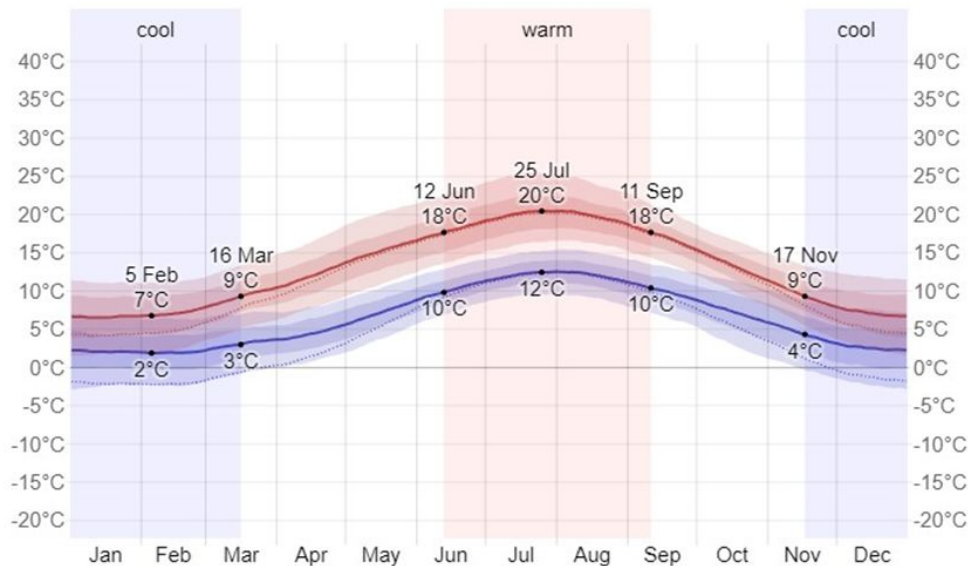
-  = School Lane
-  = The Stables Road
-  = Detached Houses
-  = Terrace Houses
-  = Parish Church



Climate

In Walton, the summers are comfortable and partly cloudy, and the winters are long, very cold, windy, and mostly cloudy. Over the course of the year, the temperature typically varies from 2°C to 20°C and is rarely below -3°C or above 25°C.

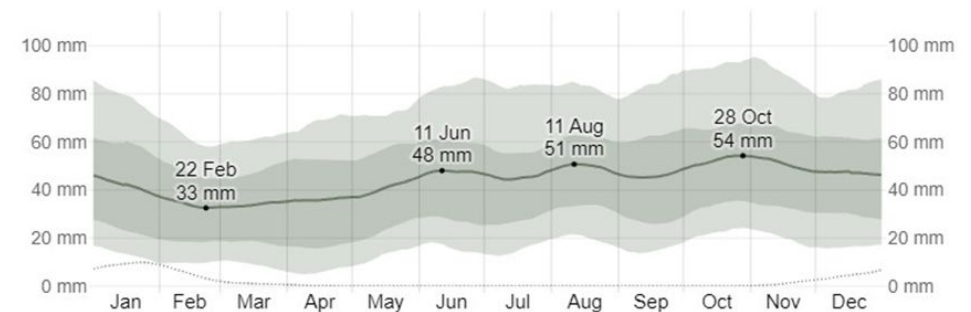
Average High and Low Temperature in Walton



The warm season lasts for 3.0 months, from 12 June to 11 September, with an average daily high temperature above 18°C. The hottest month of the year in Walton is July, with an average high of 20°C and low of 12°C.

The cool season lasts for 4.0 months, from 17 November to 16 March, with an average daily high temperature below 9°C. The coldest month of the year in Walton is January, with an average low of 2°C and high of 7°C.

Average Monthly Rainfall in Walton



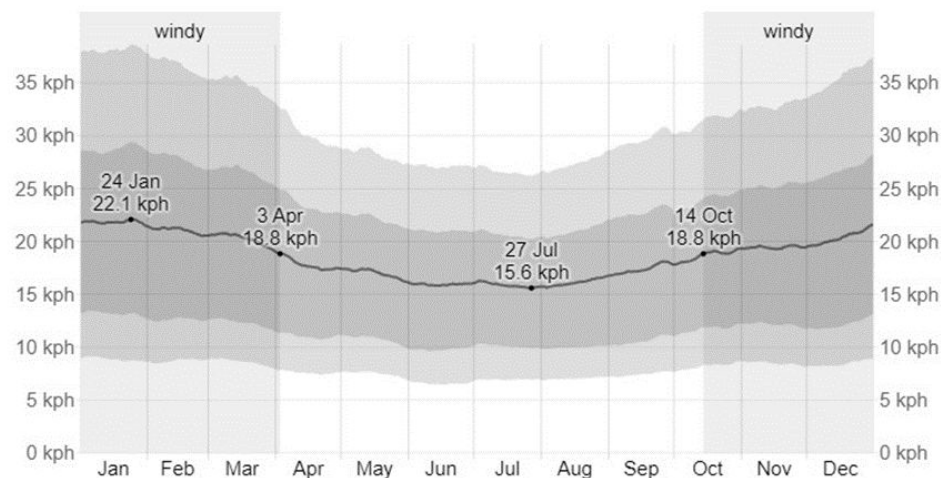
To show variation within the months and not just the monthly totals, we show the rainfall accumulated over a sliding 31-day period centred around each day of the year. Walton experiences some seasonal variation in monthly rainfall.

Rain falls throughout the year in Walton. The month with the most rain in Walton is October, with an average rainfall of 53 millimetres.

The month with the least rain in Walton is March, with an average rainfall of 34 millimetres.

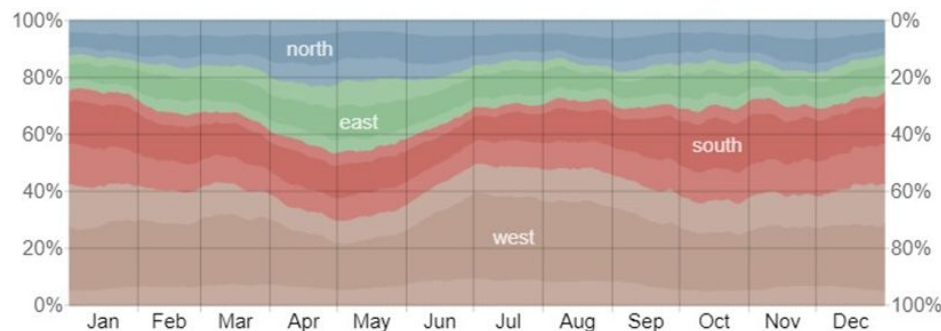
Climate

Average Wind Speed in Walton



The windier part of the year lasts for 5.6 months, from 14 October to 3 April, with average wind speeds of more than 18.8 kilometres per hour. The windiest month of the year in Walton is January, with an average hourly wind speed of 21.8 kilometres per hour.

Wind Direction in Walton

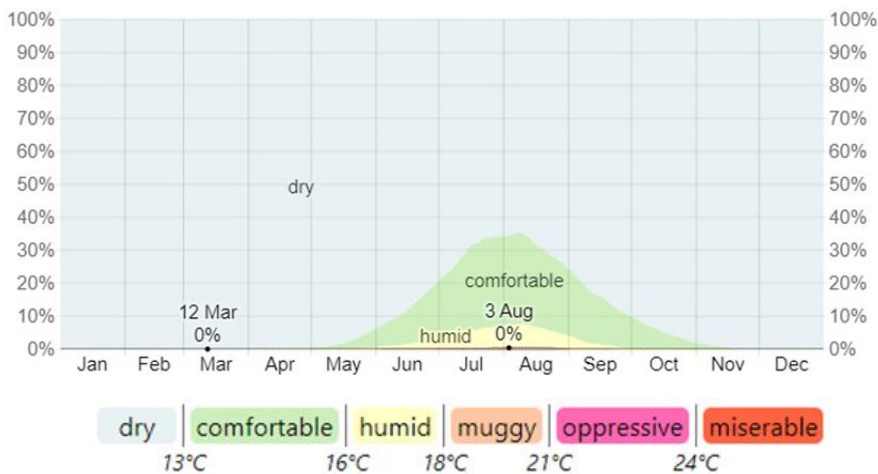


Hours of Daylight and Twilight in Walton



The length of the day in Walton varies extremely over the course of the year. In 2023, the shortest day is 22 December, with 7 hours, 26 minutes of daylight; the longest day is 21 June, with 17 hours, 4 minutes of daylight.

Humidity Comfort Levels in Walton



Site Specific Climate



Site Shadows

Shadow In Summer

9:00am



4:00pm



Shadow In Winter

9:00am

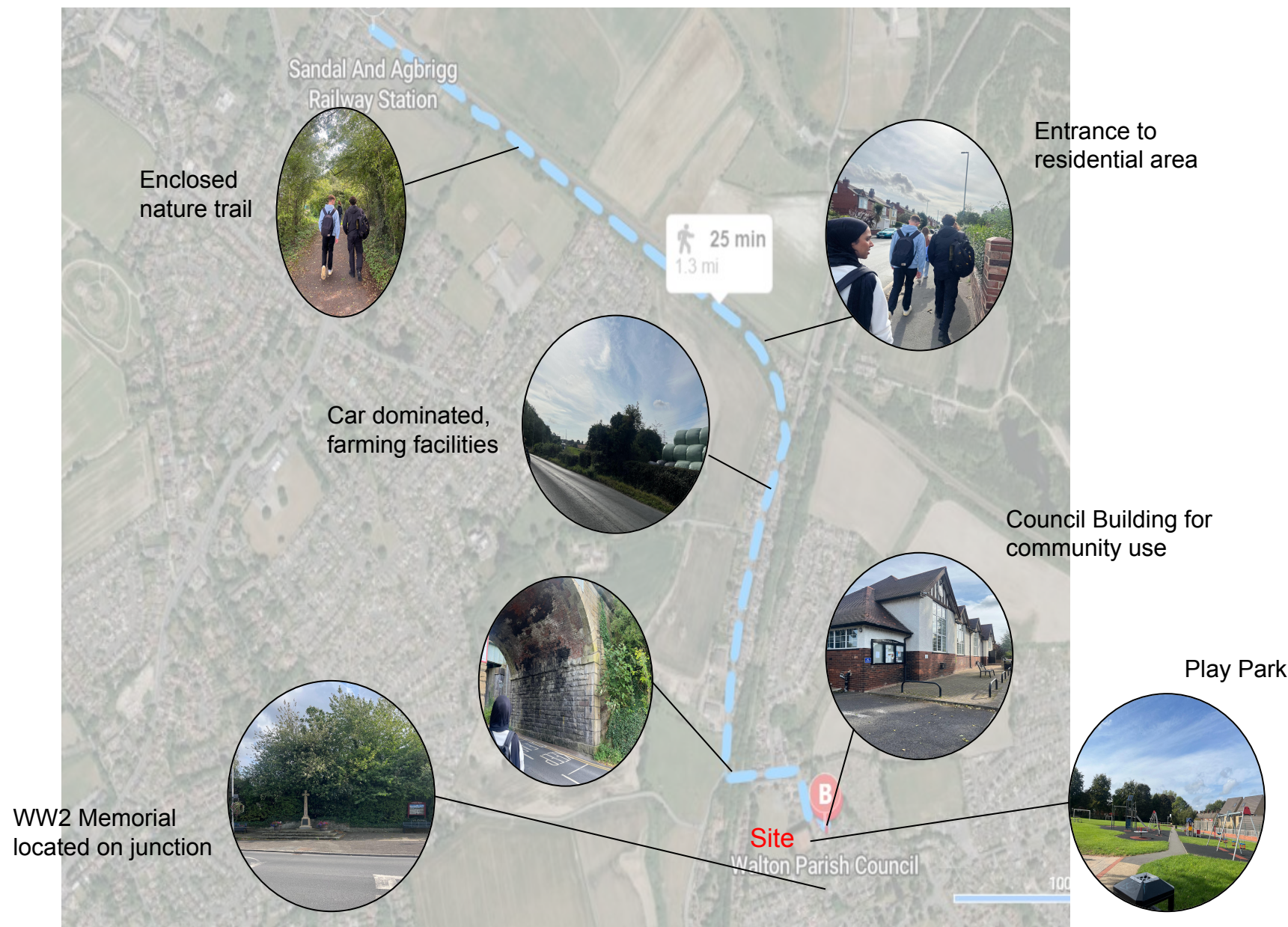


4:00pm



Surrounding Context

On Site Visit



Site Visit



Main entrance to Walton Park



Millennium memorial with small gathering area at the entrance to the park



Current playpark is popular with children after school



Basketball court



Football pitch is popular and hosts a children's football team.



Disused clay tennis courts are overgrown

Site Visit



Old tennis pavilion with toilets



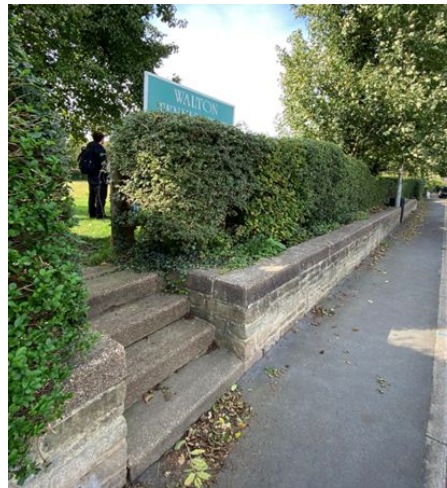
Grass with desire line



Tennis courts are exposed to sun and wind



Silver Birch and poplar are being removed for safety reasons but improved hedges or tree planting could bring more of a noise barrier from School Lane



The South entrance is too small and not wheelchair friendly.



The council's war memorial placed adjacent to a busy roundabout..

Site analysis through photos



Existing site vegetation



Bedding mix



Weigela



Yucca aloifolia



Weigela



Prunus avium



Crataegus monogyna



Alnus cordata? Conference Pear?



Fraxinus excelsior (possible die back)



Conference Pear?



Acer pseudacorus



Overgrown clay tennis court



Populus nigra

Case Studies

Research & Examples



Community Planning Toolkit

What is the purpose and scope of the engagement process?

From the outset be clear about the scope and purpose of the engagement process. For example, is the process designed to:

- Identify or prioritise what the needs and priorities for Community Planning should be?
- Develop a consensus on a proposal or plan?
- Inform the decision-making or service delivery of a community, council or department?
- Develop new or collaborative ways of implementing elements of the Community Plan?
- Review progress on the Community Plan?

Agreeing a clear purpose will help identify engagement objectives, anticipated outcomes and help to determine the scope and depth of the engagement. This can range from consultation to involvement in decision making through to community and voluntary groups delivering projects and services. Providing information on proposals, plans or services is part of any communication plan to support engagement but is not in itself community engagement.



Boldmere Futures Community Planning

Boldmere Futures Partnership, requested support from the Planning for Real Unit, to help them to run several Community Planning events to seek the views of residents about how Boldmere might develop over the coming years and to develop a prioritised Action Plan which will in turn become a Community Plan.

They wanted these events to be interactive and participative and felt that the Planning for Real process would be a great way of achieving this aim. A 3D model, coloured coded flags, pin boards, and a cloth “brick wall” were used to enable residents to put their suggestions forward.

Following training in the process, the Boldmere Futures Partnership members and volunteers supported the delivery of 3 Planning for Real community events. The Unit has also provided the group with training in the later stages of the Planning for Real process, Prioritisation and Action Planning, to enable them to take forward all the views they gathered through their consultation days.

Case Studies

PR Park Permaculture Plan

This case study by EWSP Consultancy shows a design for a new public park in England. The site is currently a large grassy area, used in part as a play area for local school children from an adjacent school to the north but otherwise little used.

The goal was to turn this area into an asset for the school and the surrounding community. One top priority was the creation of four large, multi-functional grass sports pitches, use of which would be shared between the school, and a new sports centre to be established on the site. Another key goal was to create a space which those of all ages from the area could use and benefit from – where they could connect with nature and each other in a range of different ways.

School children will participate in the community gardens and help to prepare food they grow for the restaurant as part of lessons. A nature schooling zone will allow those of all ages to learn and grow through connection with the natural environments.



Case Studies

Hyde Park Source



Hyde Park Source have a history firmly rooted in LS6 and have branched out and delivered projects across Leeds. They work collaboratively as much as possible, working in partnership with other groups and making decisions together.

They work with local communities to improve their surroundings, designing and creating attractive, exciting, safe and useful places for people to live, work and play.

Their work is guided by their principles and pathways **connect, be Active, take notice, keep learning** and **give**.



- Groups are free, weekly and take place all-year-round
- Each group is run by a staff member who makes sure everyone is safe and understands the task
- We work on site as the group of up to 15 volunteers doing different tasks.

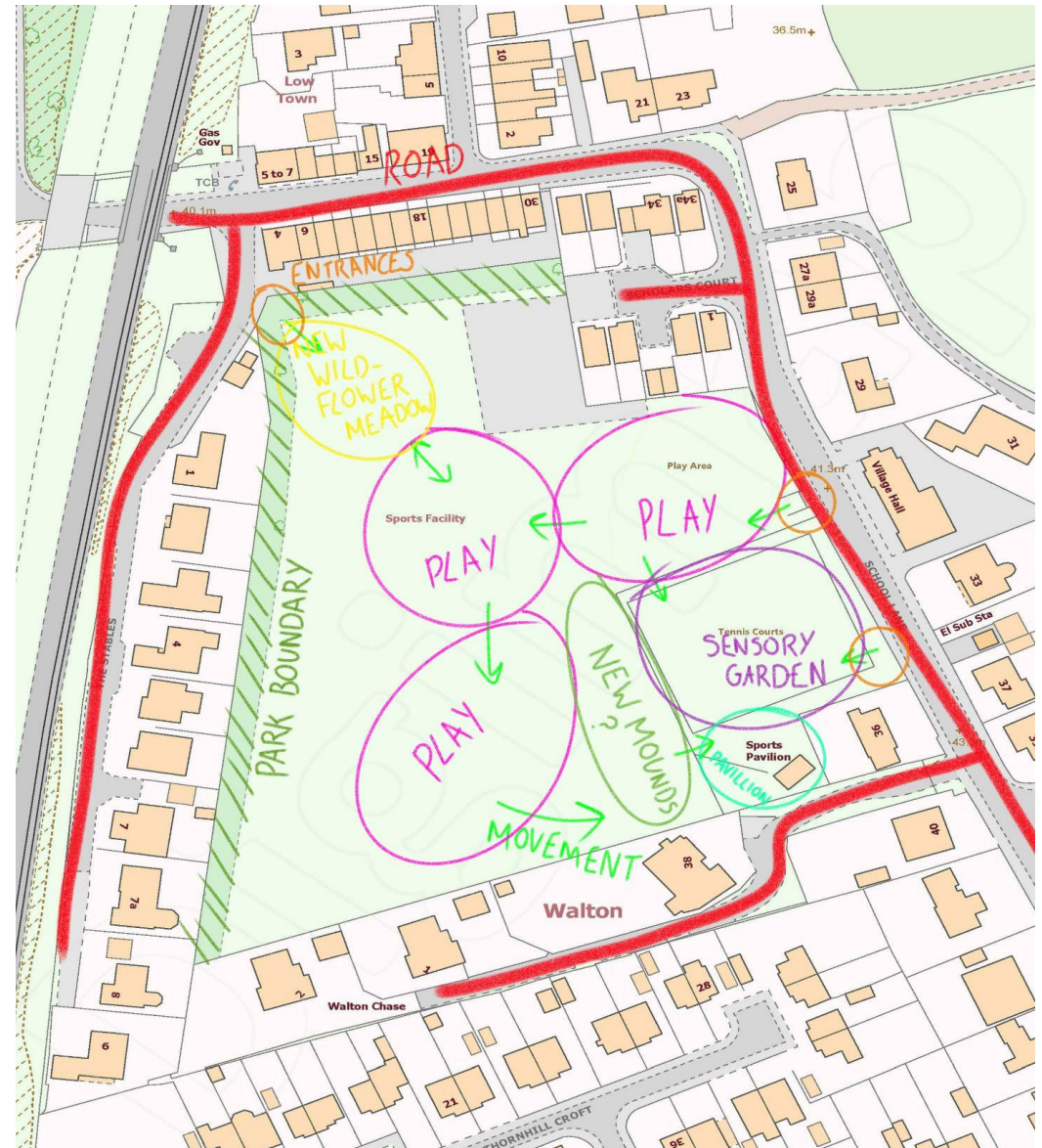
Refining Aims & Questionnaire

Refining Aims

- To create a landscape for a diverse demographic (Inclusive for all).
- To create a natural, organically designed play area.
- To improve connectivity with the rest of the park.
- To create a natural landscape with plantings to offer a rich sensory experience for the site user.

Questionnaire for the local public:

1. What age range do you belong to?
2. Do you use the park? Why? (See below).
3. What would you like to see in the park?
Boules, table tennis etc. / What do you use the park for?
4. Do you have any concerns about the space changing?
5. Any safety concerns?
6. Do you want the war memorial to be relocated to the park?
(More gathering space)
7. Do you want any community involvement after the space is completed?
Edible garden, orchard, community work.
8. Do you prefer fully mown lawns or natural grass patches within a lawn?
9. Any other concerns?



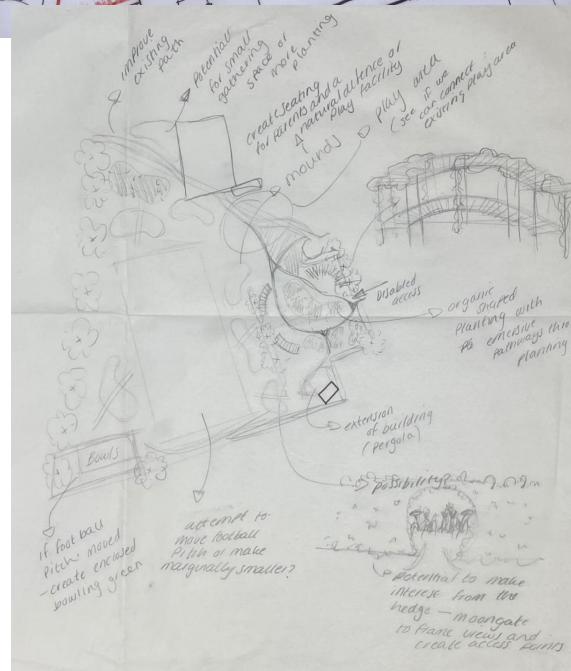
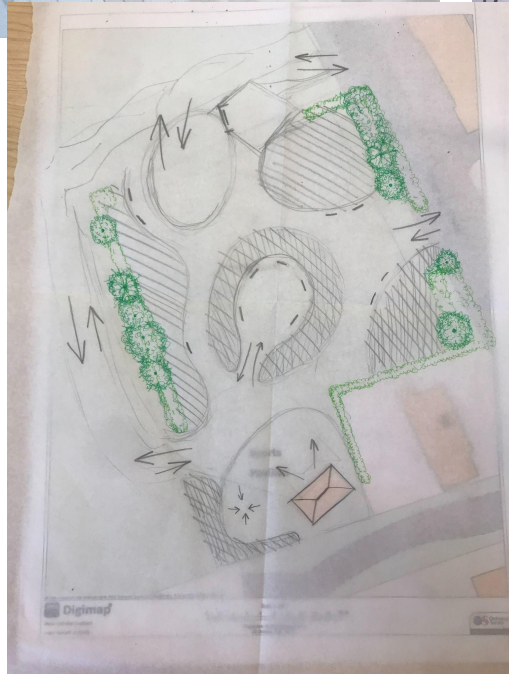
Initial ideas for site changes



Initial Ideas:

- 1 - Wildflower meadow with mown paths for habitat creation, carbon capture and interest for site users.
- 2 - Circulation made more organic with existing on site materials.
- 3 - Existing gap in hedge widened to open the space and allow for visibility between the children's play area and the site.
- 4 - Existing stepped entrance relocated to the middle of the hedge and made accessible with a suitable slope.
- 5 - New mounds? to buffer the sound from the football area to sensory garden. Also adds level change which creates interest for the site user (play for children).
- 6 - Removing part of the hedge to increase safety and open up the space. Could be developed into a seating area for pavillion cafe?
- 7 - Existing play areas. To be improved with better circulation across the site, connecting each area together as one whole place.

Individual Concept Designs



Collated Moodboard



Community Engagement



Our Previous Work...

Please scan this QR code and answer the questions to help us to gather information for our design



Please attend our presentation on the 2nd of November to see our design ideas! - See Facebook for details.

Walton Park

Leeds Beckett Landscape Architecture Students Walton Park Questionnaire.
Please Help us Redesign Walton Park by Answering These Questions

1. What age range do you belong to?

- ☐ Under 18
☐ 18-24
☐ 25-34
☐ 35-54
☐ 55-64
☐ 65+

2. Do you use the park?

- ☐ No
☐ Yes? How often?

3. What do you use the park for?

- ☐ Play
☐ Relaxing
☐ gathering
☐ Other (please specify)

4. What would you like to see in the park?

- ☐ Community garden including sensory garden
☐ Play exercise area
☐ Outdoor games
☐ Wildflower lawn
☐ Orchard
☐ Other

5. Do you have any concerns about the space changing?

- ☐ No
☐ Yes?

6. Any safety concerns?

- ☐ No
☐ Yes?

7. Do you want any community involvement within the space?

- ☐ No
☐ Yes? Would you be interested in gardening & maintenance for example?

8. Do you want the war memorial on the junction of School Lane and Shay Lane relocated to Walton Park?

- ☐ Yes
☐ No

9. Any other suggestions?

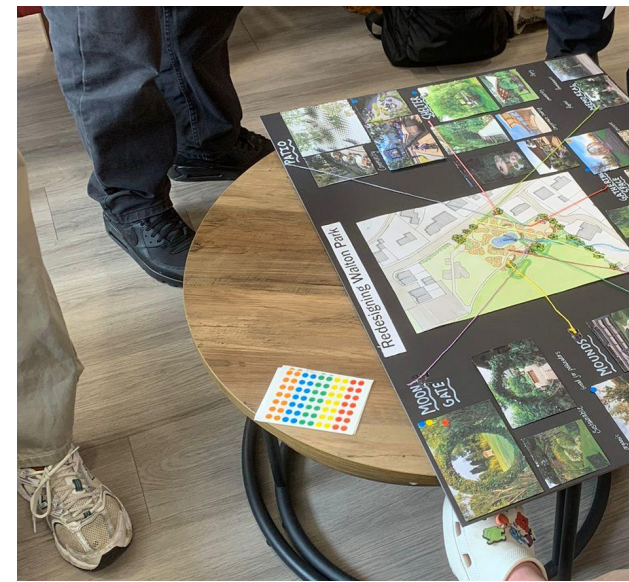
- ☐ No
☐ Yes

Thank you!

Community Engagement



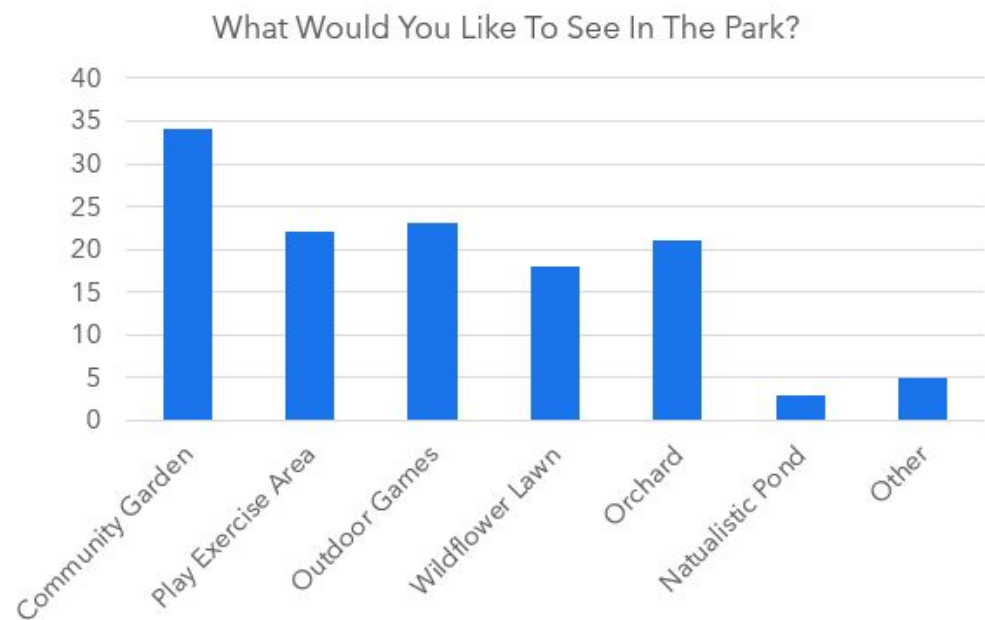
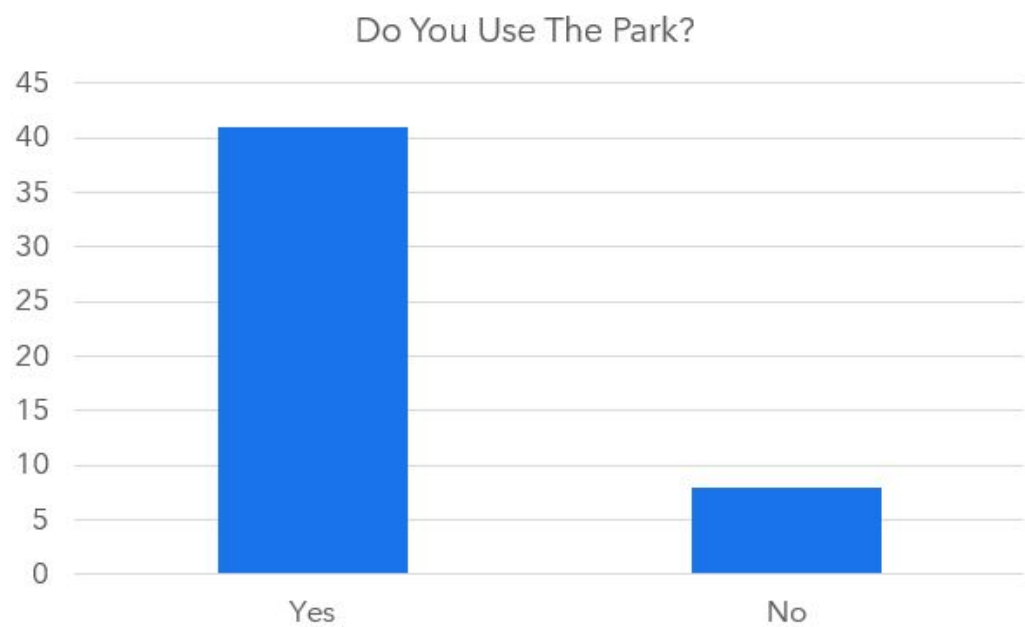
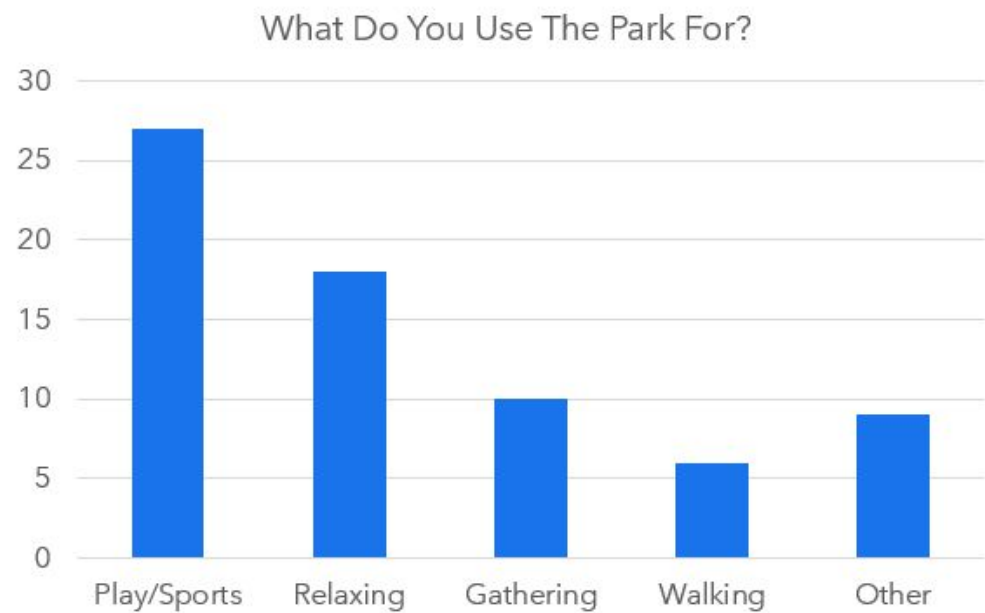
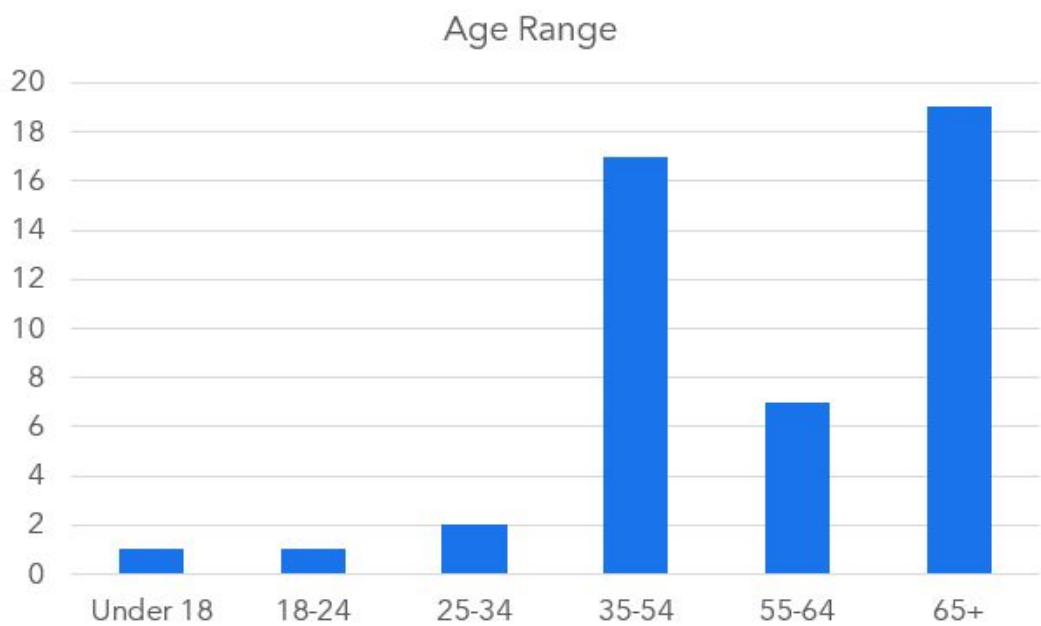
Community Engagement



For our group's community engagement, we wanted to increase our understanding of our site and empower Walton's community to have their say over our initial ideas. To do this, we produced a questionnaire and mood board/concept design, allowing people to vote on different styles and ideas we had for the site. Our engagement took place at Walton Community Library and Walton Primary Academy, where we had many positive and informative discussions with the community, giving us better knowledge of what to aim for within our site.

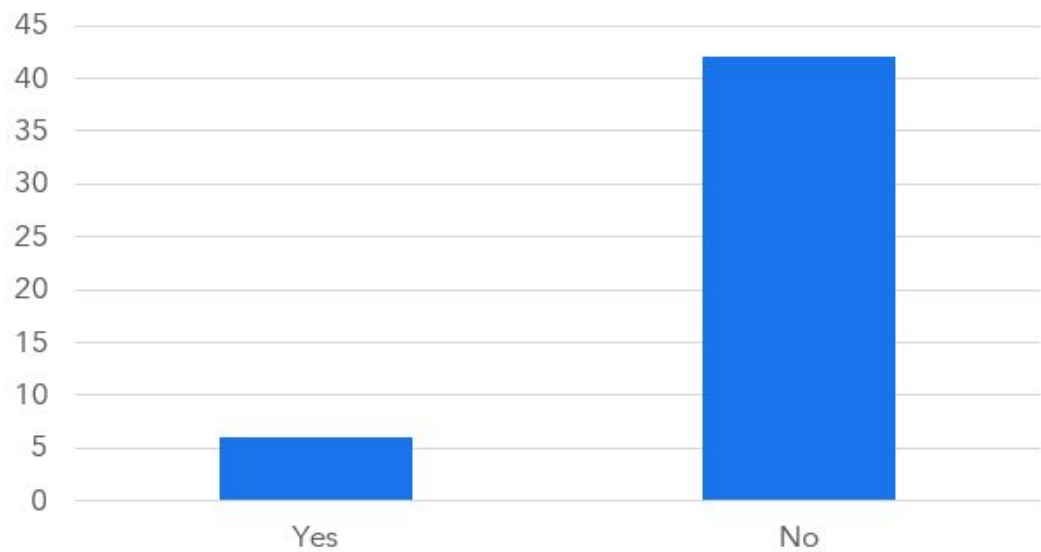


Community Engagement - Questionnaire Results

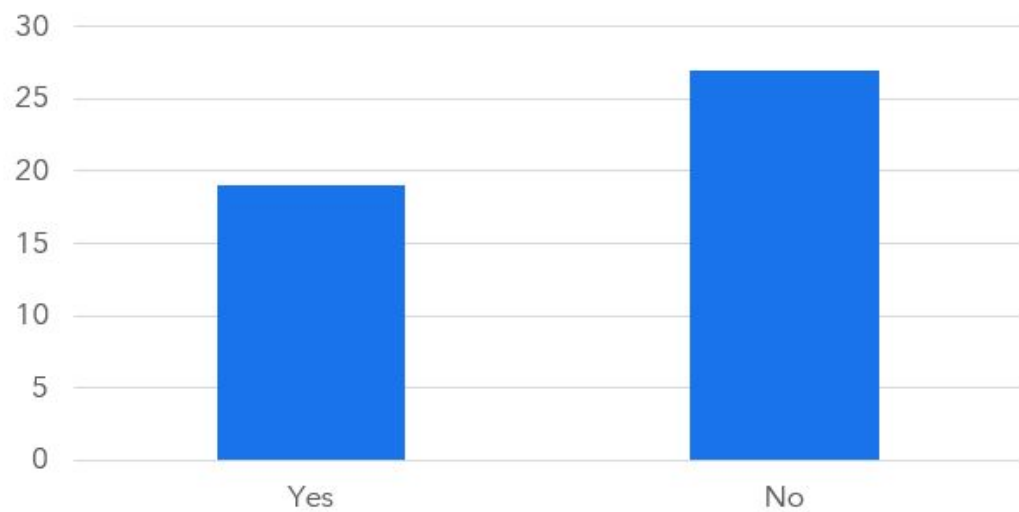


Community Engagement - Questionnaire Results

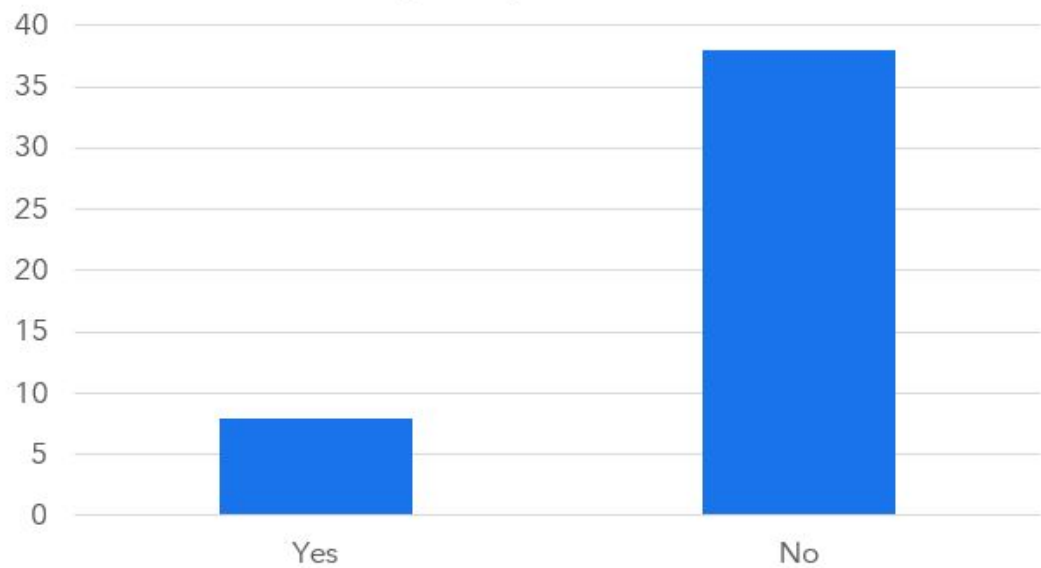
Any Concerns About The Space Changing?



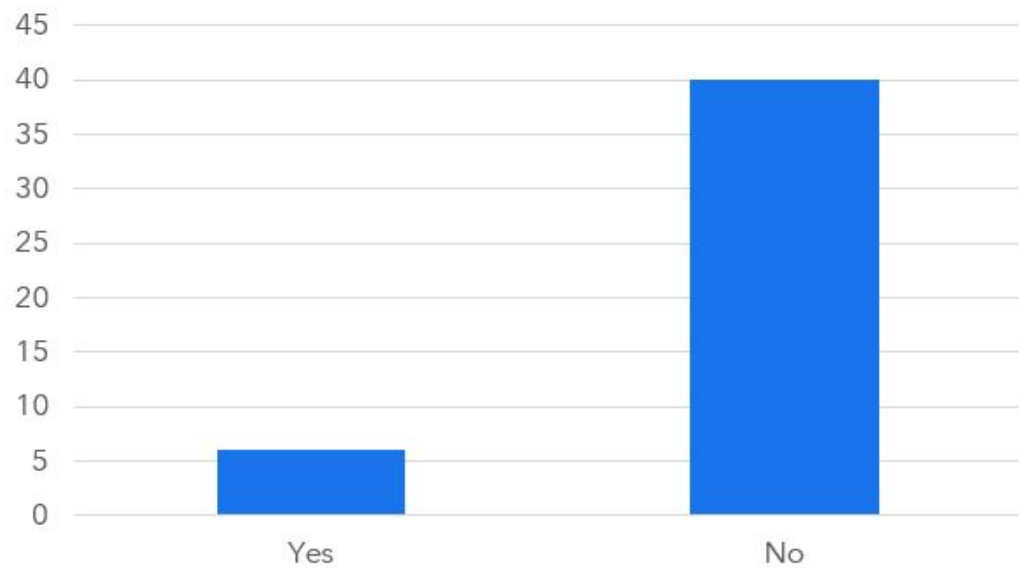
Do You Want Community Involment Within The Space?



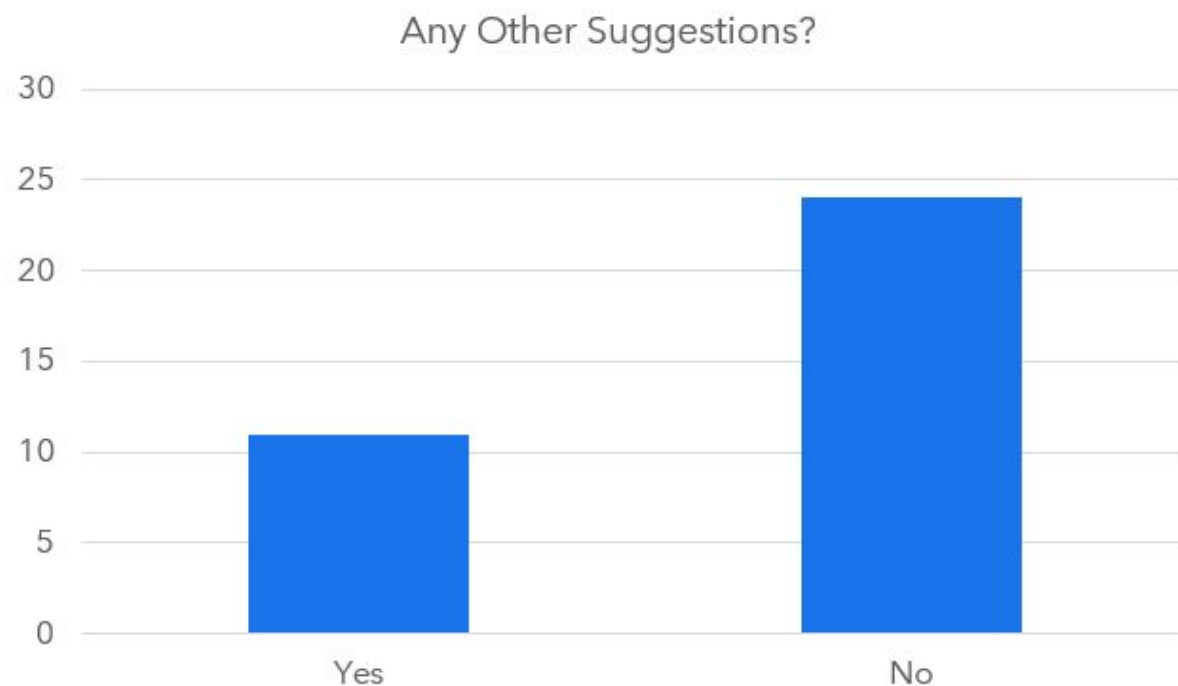
Any Safety Concerns?



Do You Want The War Memorial Moved?



Community Engagement - Questionnaire Results



Paper responses: 62

Online responses: 114

Other Suggestions:

- Café.
- Variety Of Planting e.g., Arid bed, herb bed, orchard – Low maintenance.
- Keep area level for accessibility.
- Small amphitheatre for children to perform.
- Repurpose the pavilion for community use e.g., on football days.
- Benches that are robust and do not collect water.
- Electricity extended to park from pavilion.
- Grass mounds.
- Outdoor games.
- Orchard with picnic space.
- Make reference to the old area e.g., photo of the old tennis club somewhere.

Community Engagement - Overall Results & New Aims

What We Learned:

After analysis the results from our community engagement and questionnaires, we found many similarities of what people use the site for and what they would like to see in the site.

As the site currently has a play park, football pitch and basketball court we found most people use the site for play/sports. Other common uses included relaxing and gathering with some people using it for a daily walk or to walk their dog.

From the options provided we found most people would like a to see a community garden within the site including things like a café, outdoor games, natural/native planting and level access. Other things people wanted to see in the site included a play area for older kids, wildflower lawn, orchard and a naturalistic pond.

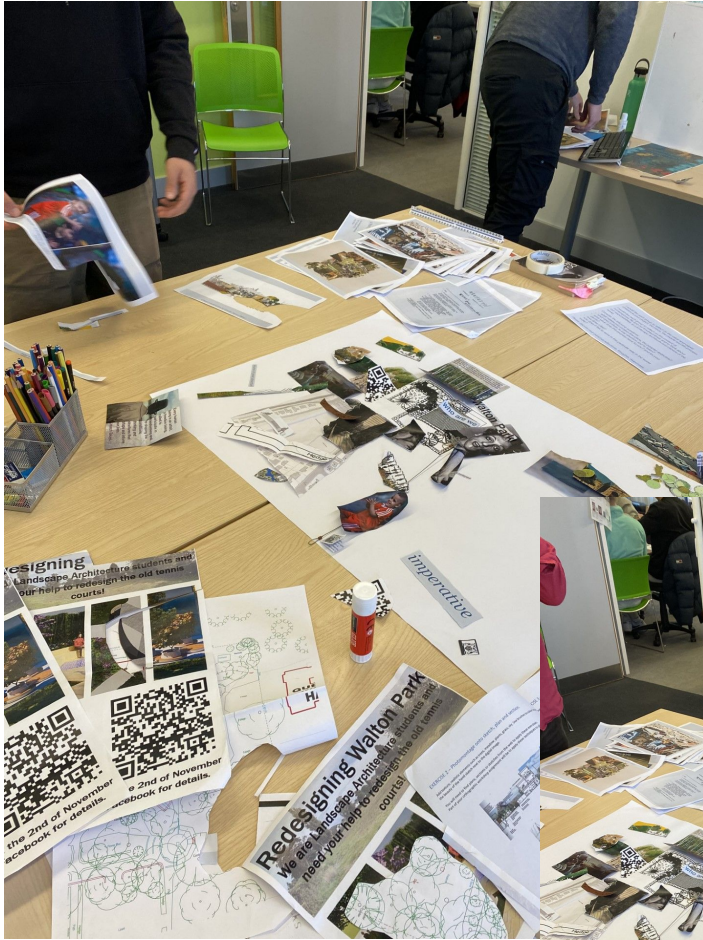
The idea to move the nearby war memorial to the site was thought strongly against in our engagement leading to our conclusion to leave it where it is.

Our engagement also told us that several people would be interested to get involved with the planting and maintenance of the scheme by setting up volunteer groups.

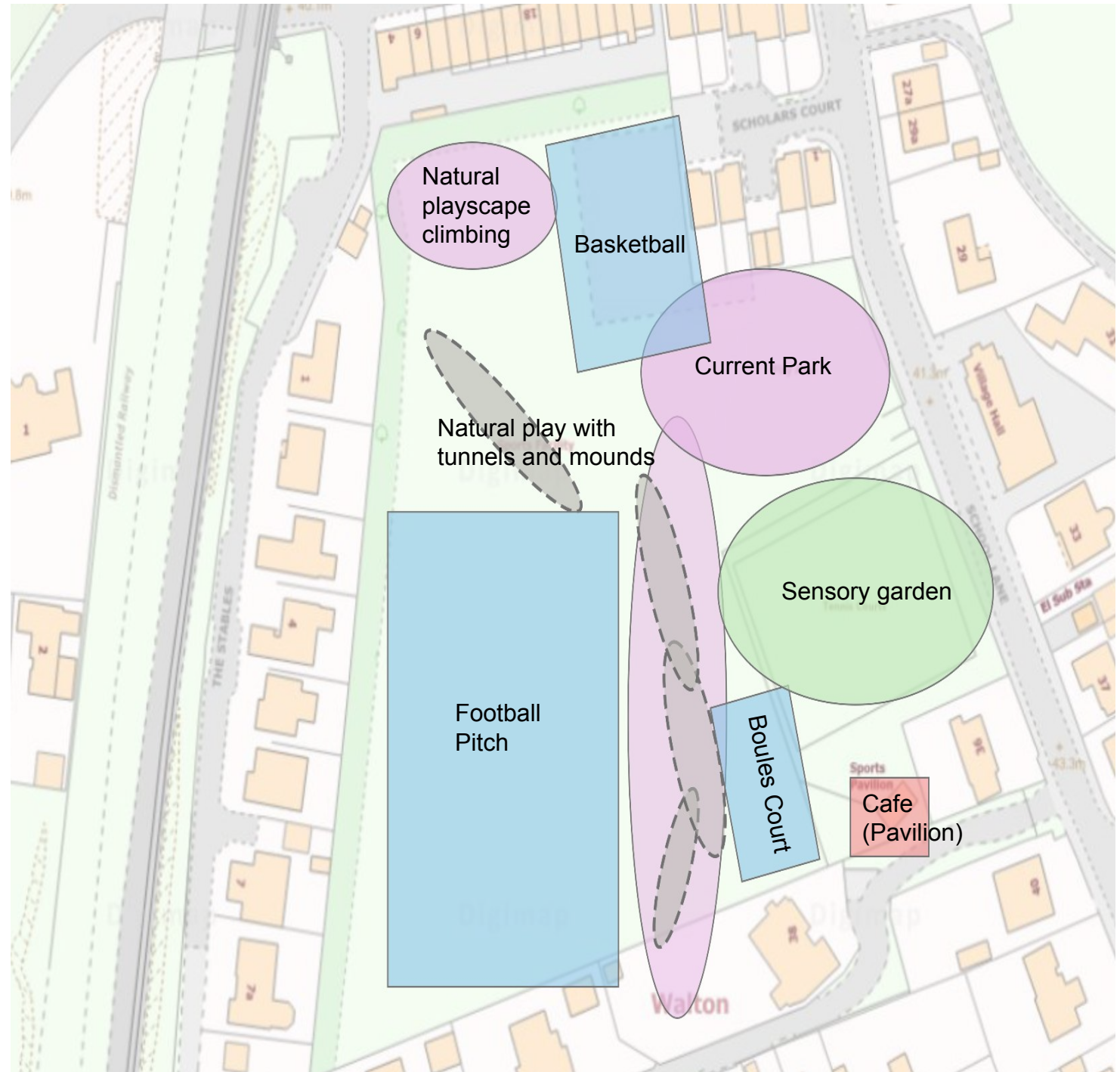
New Aims:

- To create a landscape for a diverse demographic (Inclusive for all).
- To create a natural, organically designed play area.
- To improve connectivity with the rest of the park.
- To create a natural landscape with plantings to offer a rich sensory experience for the site user.

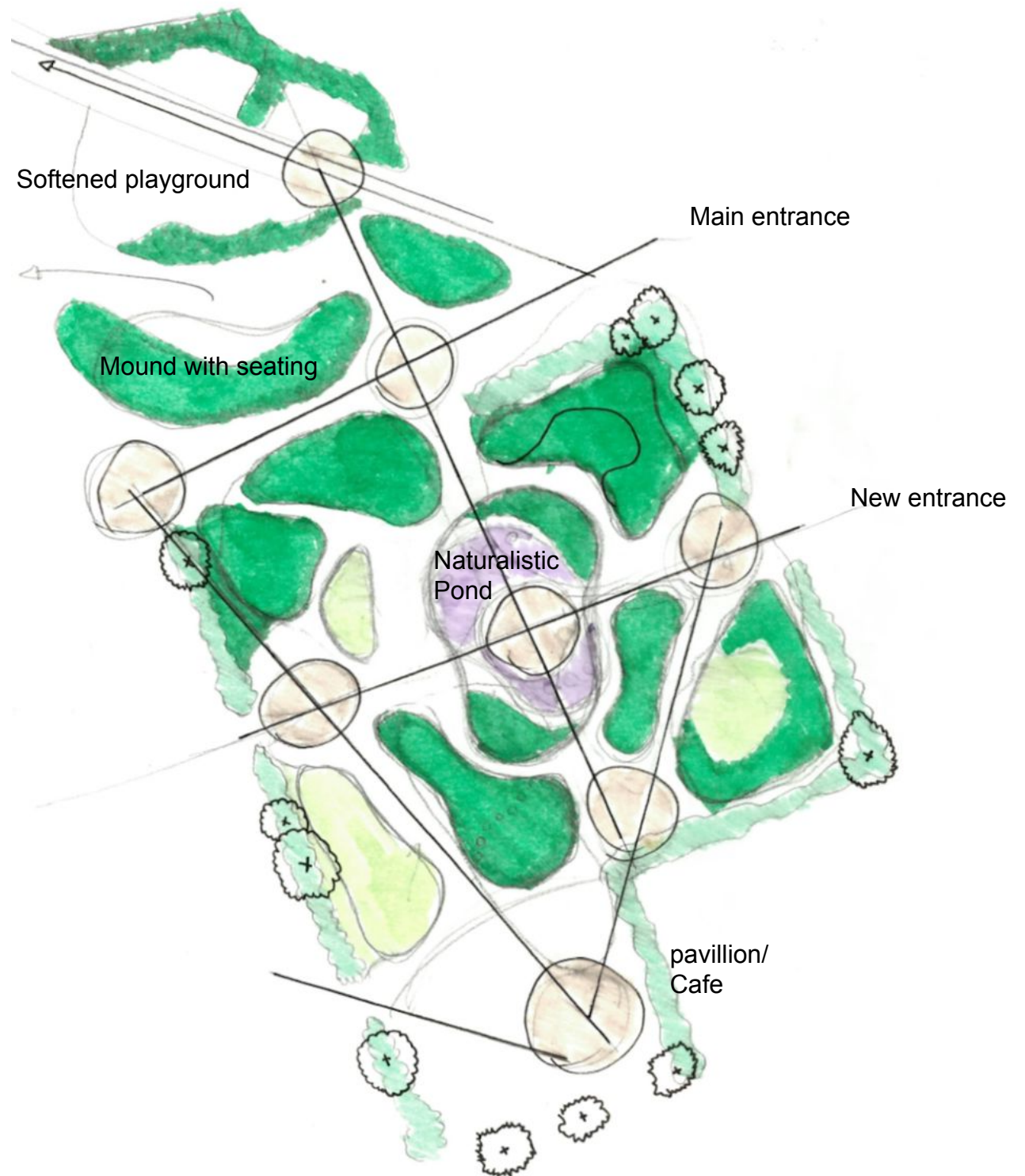
Collage Manifesto



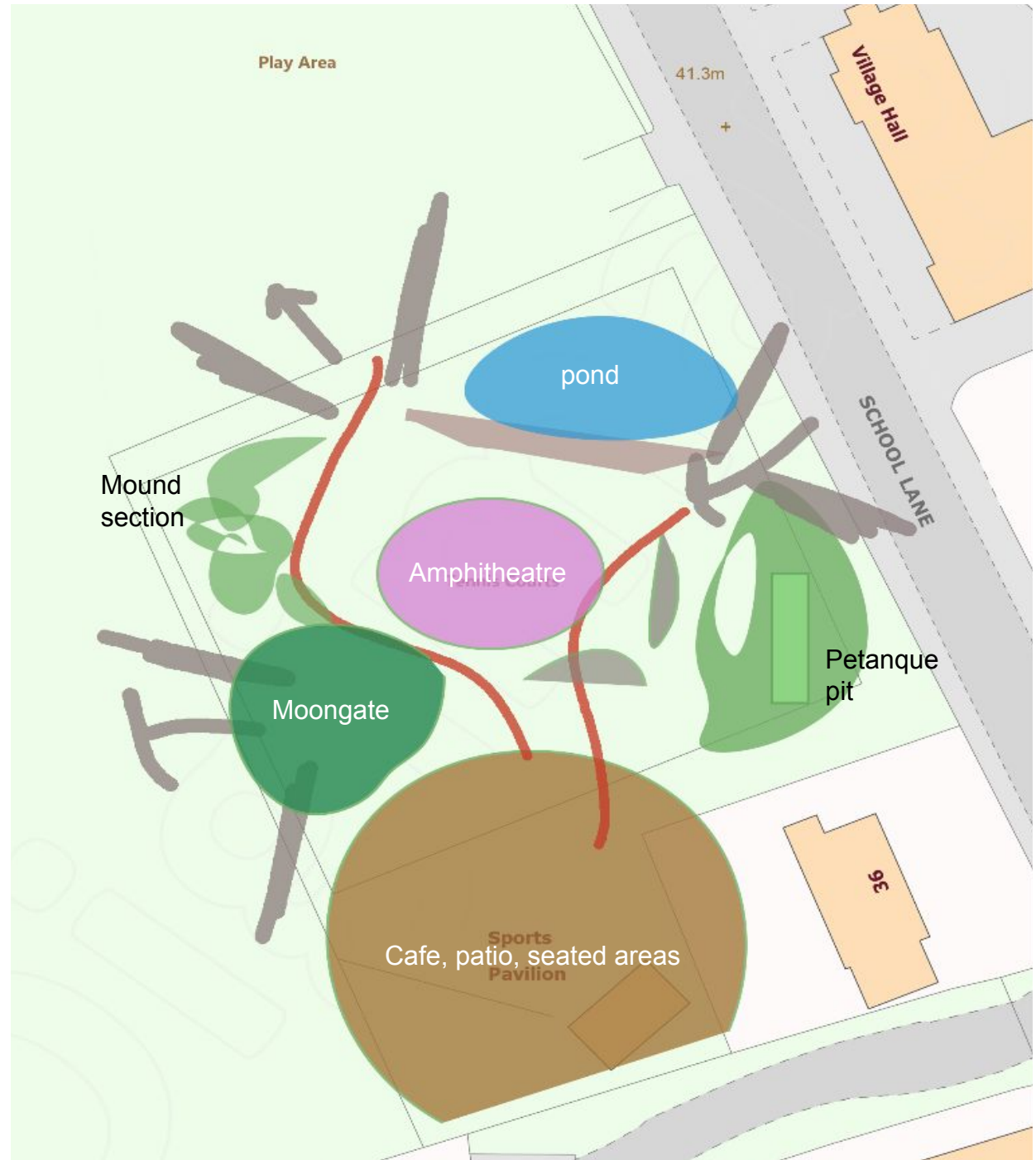
Initial Zoning Diagram - Whole Park



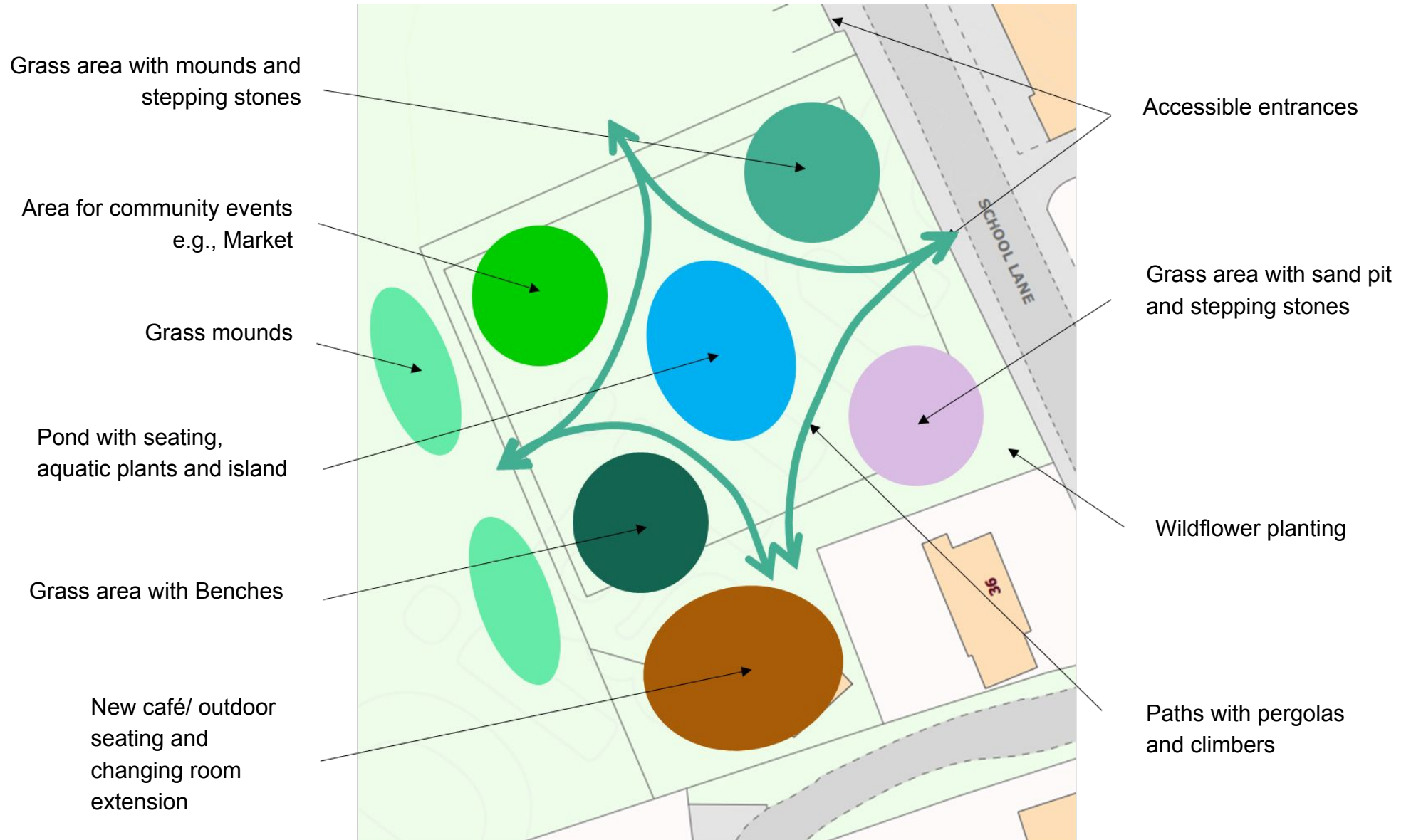
Design Concept 1



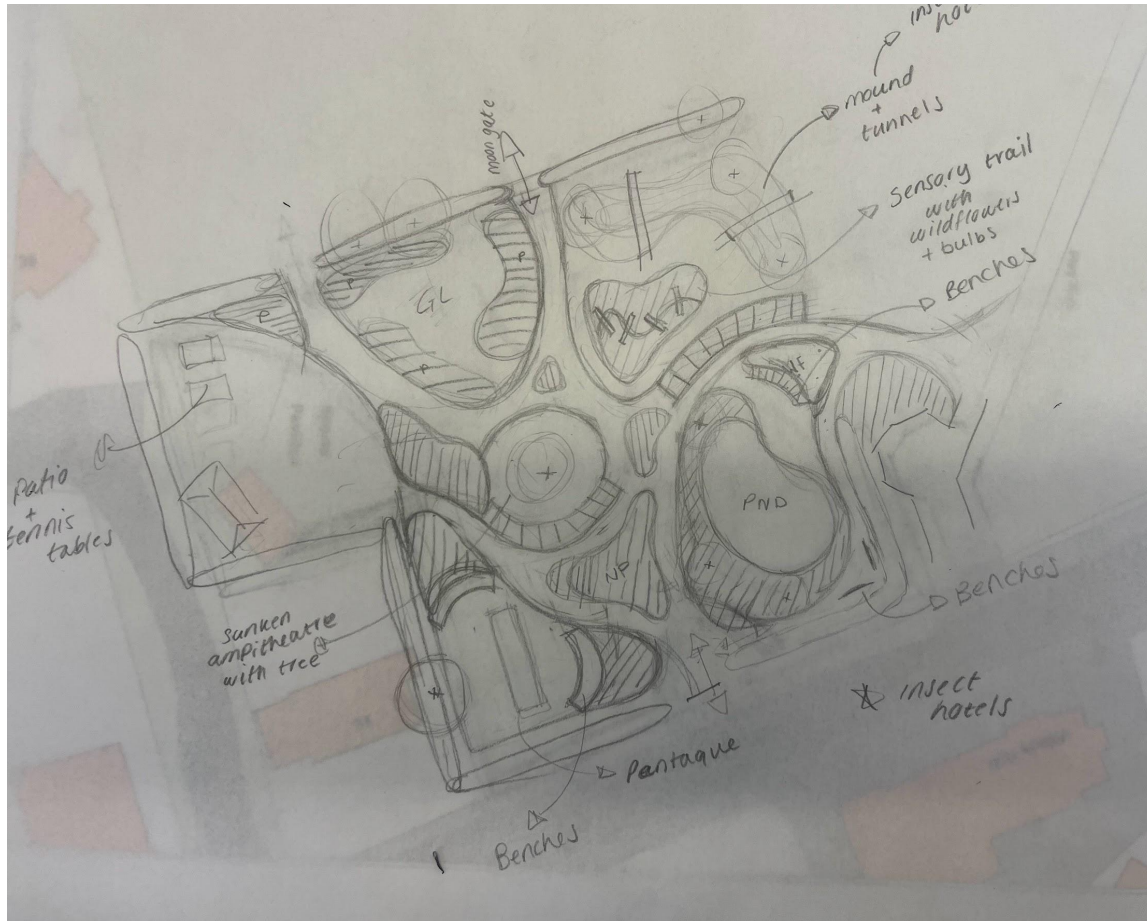
Option 1 - Zoning Diagram Tennis Court Area



Option 2 - Zoning Diagram Tennis Court Area



Option 1 - Design Process



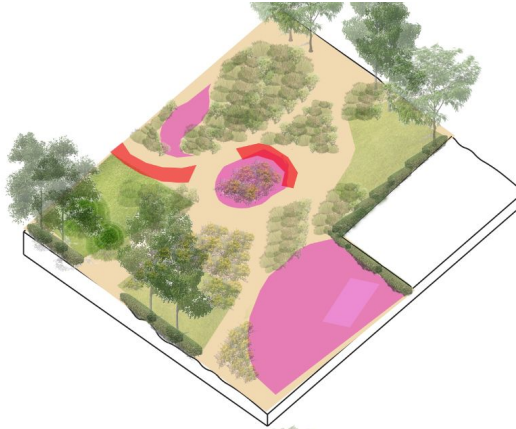
Sketch



CAD Drawing

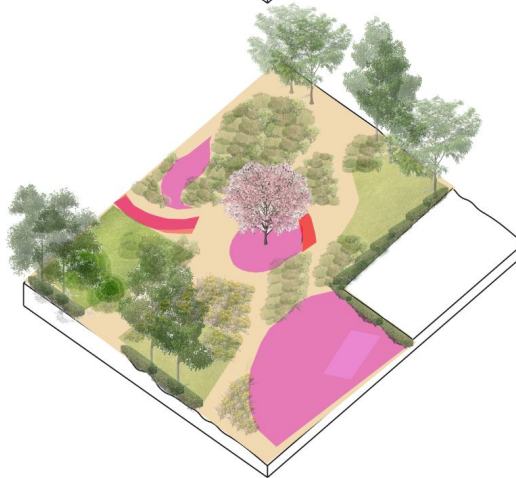
Option 1 - Design Phase

Design phase 1



Design phase 1 includes placing permeable resin bound gravel for the pathways surrounded by lawns and planting. Grass mounds will also be placed and new trees planted.

Design phase 2



Design phase 2 includes a new cherry tree which will be placed in a ditch to create an amphitheatre like format.

Key:

Pink- Missing different hardscape

Red- Missing covered pergolas

Design phase 3

Design phase 3 includes placing in the new hardscape materials and transforming the large planting area to a naturalistic pond. The covered pergolas will also be put in.



Option 1 - Masterplan



Option 1 - Sections



Option 1 - Precedent images



Option 2 - Design Process

Grass area with mounds and stepping stones

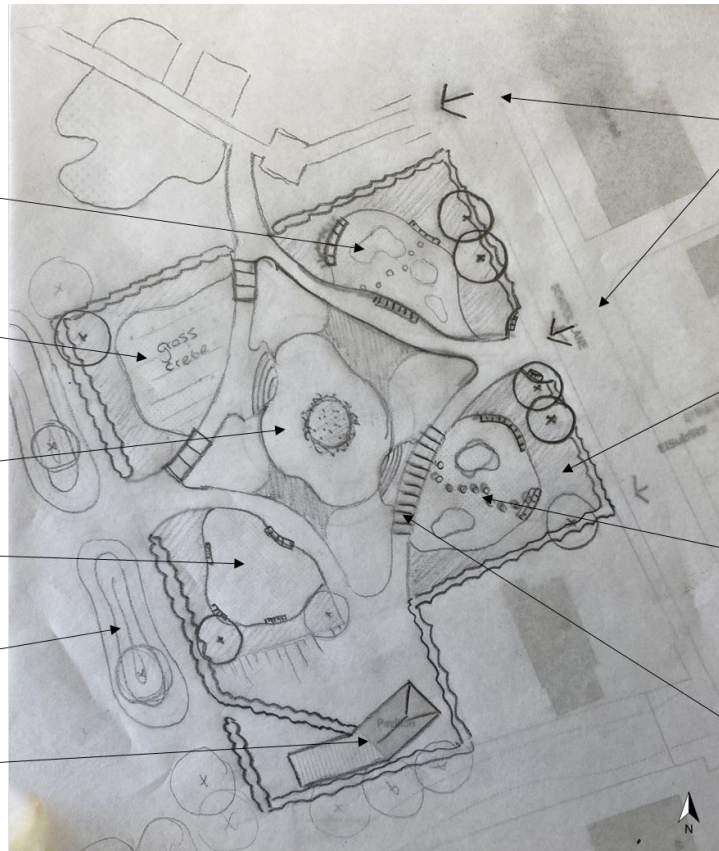
Area for community events

Sunken pond with stepped seating, aquatic plants and island

Grass area with Benches

Grass mound

New café/ outdoor seating and changing room



Sketch

Accessible entrances

Planting

Grass area with sand pit and stepping stones

Pergolas with climbers



CAD Drawing

Option 2 - Masterplan



Option 2 - Section



Option 2 - Precedent images



Option 2 - Precedent images



Option 2 - Precedent images



Option 1 & 2 - Material Palette

Perennial Mix Palette



From left to right: *Molinia caerulea* subsp. *arundinacea* 'Transparent', *Echinacea purpurea*, *Foeniculum vulgare* 'Purpureum', *Astrantia* 'Roma', *Verbena bonariensis*, *Achillea millefolium* 'Terracotta', *Erigeron karvinskianus*, *Nepeta x fassenii*, *Knautia macedonica*, *Anemathele lessoniana*, *Helenium* 'Moerheim Beauty', *Salvia nemorosa* 'Amethyst', *Anthemis triumphettii*, *Geranium* 'Mavis Simpson', *Allium* 'Purple Sensation' (bulb), *Artemisia* 'Powis Castle', *Gaura lindheimeri* 'Whirling Butterfly', *Thymus serpyllum*.

Grasses Palette



From left to right: *Molinia caerulea* subsp. *arundinacea* 'Transparent', *Deschampsia cespitosa* 'Goldtau', *Sesleria autumnalis*, *Hakonechloa macra*, *Pennisetum alopecuroides* 'Little Bunny'.

Pond Palette



From left to right: *Iris pseudacorus*, *Ceratophyllum demersum* (Rigid Hornwort), *Caltha palustris* (Marsh Marigold), *Lythrum salicaria* (Purple Loosestrife), *Juncus effusus* (Common Rush), *Nymphaea alba*.

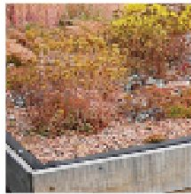
Option 1 & 2 - Material Palette

New Trees & Shrubs



From left to right: Amelanchier lamarkii, Prunus 'Kanzan', Euonymus fortunei 'Emerald Gaiety', Lavandula angustifolia 'Hidcote'.

Hardscape Palette



From left to right: Addaset New Scandinavian Pearl Resin Bound by Addagrip, Brackendale Indian Sandstone Blasted by Marshalls, Grassguard in Earth brown by Marshalls, Sedum roof covering wooden framed pergola, Landscape Compact benches by Mmcite, Recycled plastic tunnels under earth mounds.

Option 1 & 2 - Final A1 Sheets



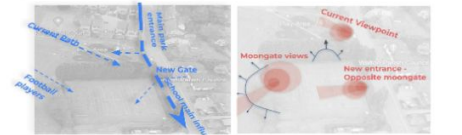
Design Aims

- Create a impactful sensory experience through designing organic shaping of wild flower meadows, soft plantings and grass areas to fulfil the blend of play and relaxation for community.
- To improve connectivity with current play park areas creating a deeper sense of cohesion and togetherness.
- To ensure the site is inclusive and easy access for all users across a wide demographic.

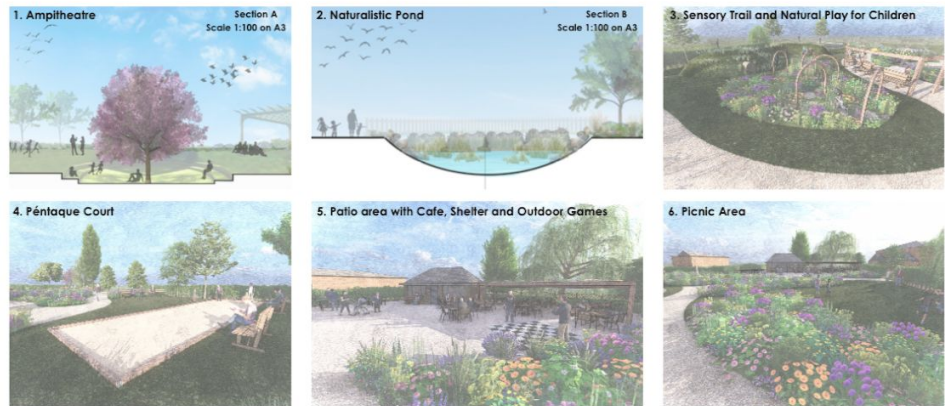
Site Analysis



Walton Park is located to the south east of Wakefield and surrounded by a residential area. The old tennis courts to the south east edge of the park have been removed leaving an open space. The site experiences noise pollution from the road along the east side. The site is sheltered from the south west prevailing winds due to the surrounding buildings, mature trees and hedge. In general the site receives a high level of sun light as a clear open space, only the south edge is shady due to the surrounding buildings.



Design One was inspired by the surrounding Walton Hall and nature reserves to create an organic shaped sensory garden, an inclusive and welcoming design for Walton's demographic. The design encompasses six character areas. This includes a small amphitheatre with cherry tree, suitable for small performances and acts as a central focal point within the design. A naturalistic pond acts as an oasis for wildlife, increasing Walton park's biodiversity, and remains safe with a low barrier around the edges. The sensory trail and mound with tunnels create a natural play area for younger children, enclosed by a pergola for parents to sit and watch. The Pénitence court allows older generations to take part in outdoor games, with seating around the edge providing the opportunity for social events. The existing pavilion has potential to become a small cafe with outdoor seating. The patio area supports other outdoor games such as table tennis for teenagers and an interactive chess set. Finally the picnic area offers a more spacious spot for residents to relax and play whilst surrounded by nature.



Walton Park Design

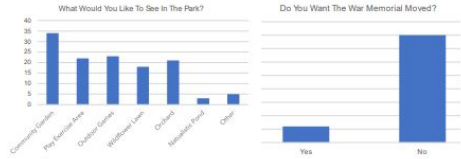
Community Engagement - we wanted to increase our understanding of our site and empower Walton's community to have their say over our initial ideas. To do this, we produced a questionnaire and mood board/concept design, allowing people to vote on different styles and ideas we had for the site. Our engagement took place at Walton Community Library and Walton Primary Academy, where we had many positive and informative discussions with the community, giving us better knowledge of what to aim for within our site.



Data Analysis As the site currently has a play park, football pitch and basketball court we found most people use the site for play/sports. Other common uses included relaxing and gathering with some people using it for a daily walk or to walk their dog so we will create a space for community members to gather, socialize, and enjoy nature while fostering a sense of togetherness.



Data Analysis From the options provided we found most people would like a to see a community garden within the site including things like a cafe, outdoor games, natural/native planting and level access. Other things people wanted to see in the site included a play area for older kids, wildflower lawn, orchard and a naturalistic pond.



The layout of the plan was inspired from the naturalistic organic landscapes. However it follows a clear organized arrangement so it easy for site users to explore the place. The design is split into 6 distinct zones, which offer different character and uses for all generations, the park will immerse people in a naturalistic experience with the intention of reconnecting the park users with the environment through targeting the senses. Sweet smelling plants, the sound of water and the biodiversity the park will attract will enhance the environmental, social, and economic value of Walton village.



Based on your feedback we have generated a masterplan that encompasses the following features: Cafe, an extension that will be used as a changing room, outdoor seating area, sheltered green space, wildlife pond, natural planting meadow, children and teenagers playing area, local multi use area market that can be used for events and selling local products, a sand pit for children and tunnel mounds for older children. Additionally all features of the design were made while trying to enoce the environmental ecology aspects of Walton park while at the same time responding to the community feedback.



Final Presentation



Final Reflection:

Overall we received very positive feedback regarding both design sheets, the guide from the community feedback really helped us work hard to react to the aims generated and create designs based on this. Members of community picked certain aspects from both designs, highlighting the possibility of a merge including each design characteristics that were favourable.

We believe we met all aims including creating a sensory garden experience, whilst adding our own twist and encouraging ecological values to increase through the water features in both designs for example.

On the final presentation day the group dynamic worked very well and the presentation was delivered with confidence and pride behind our hard work.



All - Community feedback, Site Visit Trip, Site Analysis & Design Process

Option A- Georgie, Aimee, Sanaa, Maire

Option B- Mohamed, Charlie, George

Aimee - Site visit Images, Section/Visuals, Zoning Diagrams & Group Presentation and Group Sketchbook

George - Section/Visuals, Case Studies, Group Sketchbook, Poster and Questionnaire, Design Aims

Mohamed-Site Visit Images, Zoning Diagram, Masterplan Renders and CAD Design, Final sheet layout

Maire - Poster, Masterplan Renders and CAD Design, Material Palettes, Planting, Design Opportunities

Georgie - Newsletter Poster, Initial Design Sketch, Lumion Renders, Sketchup , Final Sheet layout

Charlie - Lumion Renders, Sketchup, Video fly through, Group Presentation and Group Sketchbook

Sanaa - Group Diaries, Sections/Visuals, Design Phase Diagram